



Recuperation systems

CATALOG IV / 2022

- ◆ RECUPERATORS
- ◆ RECUPERATION DUCTS
- ◆ BOXES AND DISTRIBUTORS



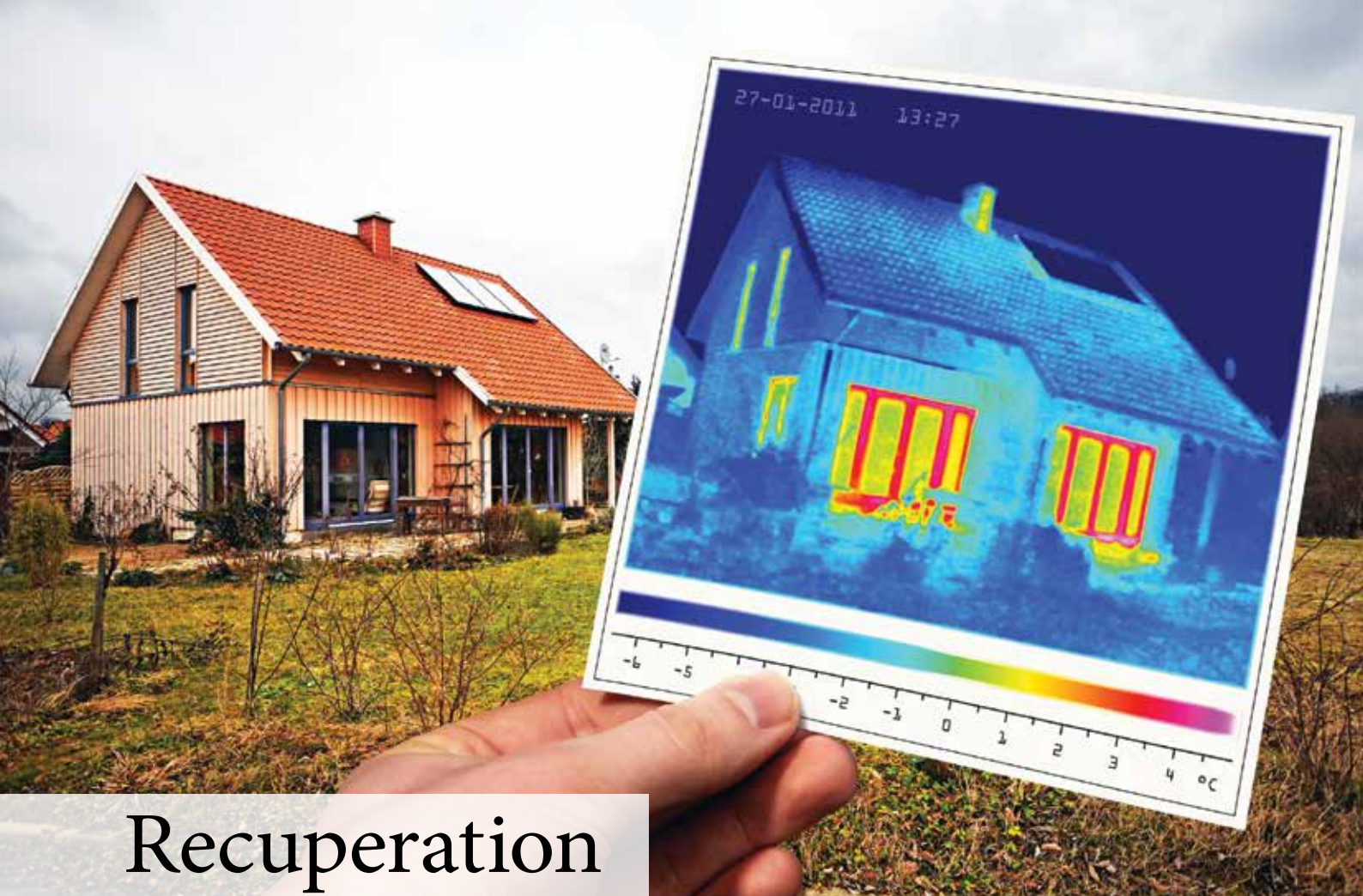
PRODMAX

Recuperation systems



HEAT RECOVERY SYSTEMS - edition IV / 2022

© FHP PRODMAX, 05-806 Sokołów, ul. Sokołowska 38, Polska



Recuperation

Recuperation System

This is a modern mechanical ventilation system that involves the recovery of heat energy by means of a heat exchanger. This process takes place in a special air handling unit (recuperator) equipped with such an exchanger. The principle of operation of the ventilation system with heat recovery is the delivery and heating of fresh air into a residential building with used air, removed from the building through the heat exchanger.

Method of operation

Recuperation systems are used to reduce energy consumption and daily temperature stabi-

lization inside the building. In addition to heat recovery, recuperation offers many other advantages: the supply of fresh air, reduction of air humidity inside the building, no condensation on windows, no allergens, no insects (flies, mosquitoes), elimination of fungus and mould. Unlike gravity ventilation, mechanical and continuous air exchange is independent of ambient conditions. Mechanical ventilation can be further enhanced using a ground heat exchanger (GHE), in which the air preheats during winter and cools in the summer before entering the house.

Table of contents

VENT-FLEX SYSTEM

VENT-FLEX System	p. 4
VENT-FLEX - Technical Parameters	p. 5
Plenum Boxes	p. 6
Straight Plenum Boxes	p. 7
Flat distribution boxes	p. 8
Single-row distribution boxes	p. 11
Two-row distribution boxes	p. 12
Connection Fittings	p. 15
Plastic boxes and elements	p. 16

CIRCULAR DUCTING SYSTEM - ZINC PLATED

Round Cable Systems - Zinc	p. 18
Dampers and reducers	p. 19

RECTANGULAR DUCT SYSTEM - GALVANISED

Rectangular duct system - galvanised	p. 20
--	-------

AIR INTAKES, EXHAUST VENTS

Air intakes, exhaust vents	p. 25
----------------------------------	-------

INSULATION FOAMS

Insulation foams	p. 26
Insulated Ducts	p. 27

DIFFUSERS

Supply / exhaust diffusers	p. 28
Round Damper with the Silencing Function	p. 28
Long range nozzle	p. 29

MOUNTING MATERIALS

Mounting Materials	p. 30
--------------------------	-------

AIR HANDLING UNITS	p. 31
--------------------------	-------

CONTROL PANELS	p. 48
----------------------	-------

OPTIONAL EQUIPMENT	p. 49
--------------------------	-------

GHE – GROUND HEAT EXCHANGE	p. 50
----------------------------------	-------

Installation guidelines	p. 51
-------------------------------	-------

DUCTED FILTER - AIR PURIFIER	p. 52
------------------------------------	-------

COMMERCIAL TERMS AND CONDITIONS	p. 54
---------------------------------------	-------

CONTACT	p. 56
---------------	-------

VENT-FLEX

VENT-FLEX System is the latest ventilation solution for houses, apartments and small-volume buildings. VENT-FLEX System consists of flexible ducts, plenum boxes, distribution boxes, by means of which you can quickly and efficiently perform the mechanical ventilation system in compliance with all European Union construction regulations.

One of the main advantages of VENT-FLEX is the flexibility of the system, small dimensions that allow installation in ceilings, walls and ceilings.

VENT-FLEX:

- **Flexible** during installation
- **Available dimensions include:** 63, 75 and 90 mm
- **Easy installation** – without the need for special tools
- Completely **tight and durable**
- **Quiet and efficient**
- **High hygiene level of the installation** – thanks to the antistatic and antibacterial coating of the VENT-FLEX duct, it prevents the formation of fungus and mould, which has a significant effect on the quality of air supplied to the building.
- **Brak korozji** – w przeciwieństwie do tradycyjnych instalacji wykonywanych za pośrednictwem stalowych przewodów typu spiro system VENT-FLEX eliminuje konieczność docinania przewodów np. za pośrednictwem szlifierki kątowej podczas montażu co powoduje zerwanie warstwy ocynku zabezpieczającej przewód i w późniejszym czasie korozję tych miejsc.
- **Quick and easy cleaning** of the entire installation – easy and efficient cleaning of the installation without limitations characteristic of conventional systems, such as, protruding mounting screws or tees, which often make it impossible to clean the installation or restrict the access.
- **Minimum pressure losses** – minimum number of fittings (tees, elbows), which generate point flow re-

sistance significantly affecting the performance and energy-saving features of the ventilation system.

- Unlike the conventional system, easy installation of VENT-FLEX and minimum number of mounting components **make it possible to perform installation within 2-3 working days** in a typical single detached dwelling.

TECHNICAL PROPERTIES

- High mechanical compressive strength of 8 kN/m² according to PN50086-24/ while maintaining high susceptibility to bending
- temperature range from -20°C to +60°C
- elasticity module 1,2 MPa
- elongation at break 50%
- fire resistance UL94 according to PN50068
- high tightness of the system / thanks to the use of EPDM gaskets the system meets tightness class C according to EN 12237
- noise dampening capacity
- resistant to alcohol, fats, oils and petrol
- relatively low air flow resistance
- resistance to atmospheric influences
no corrosion as a result
- Hygienic certificate PZH



Technical parameters

Vent - Flex, Vent - Flex PLUS

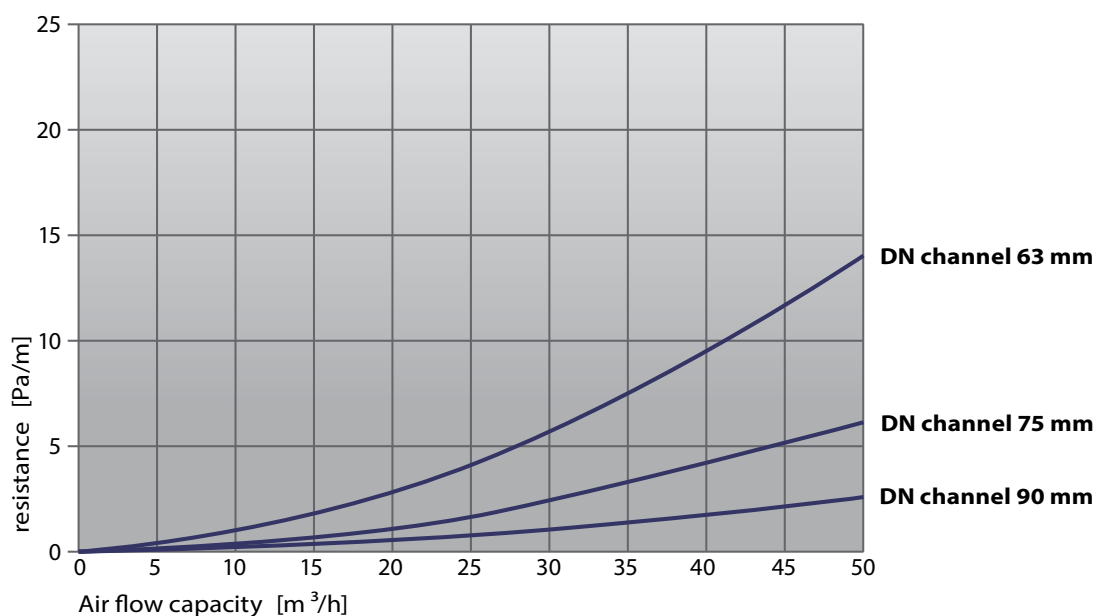


TECHNICAL INFORMATION:

Index [Vent-Fleks PLUS]	Index [Vent-Fleks]	Diameter	D-Outside [mm]	D-Inside [mm]
SK01/Ø	SK01/Ø/B	DN 63	64	54
SK01/Ø	SK01/Ø/B	DN 75	76	64
SK01/Ø	SK01/Ø/B	DN 90	91	78

CAPACITY

Capacity in m ³ /h:	DN 63			DN 75			DN 90		
	2 m/s	2,5 m/s	3 m/s	2 m/s	2,5 m/s	3 m/s	2 m/s	2,5 m/s	3 m/s
1 duct	15 m ³ /h	20 m ³ /h	25 m ³ /h	22 m ³ /h	28 m ³ /h	34 m ³ /h	34 m ³ /h	42 m ³ /h	51 m ³ /h
2 ducts	30 m ³ /h	40 m ³ /h	50 m ³ /h	44 m ³ /h	56 m ³ /h	68 m ³ /h	–	–	–
3 ducts	45 m ³ /h	60 m ³ /h	75 m ³ /h	66 m ³ /h	84 m ³ /h	102 m ³ /h	–	–	–



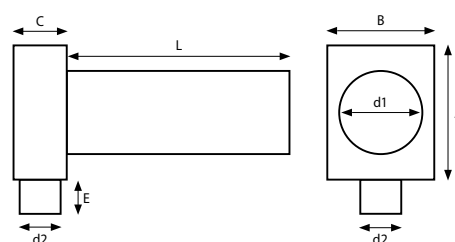
Plenum Boxes

Single Port Plenum Box

MATERIAL: galvanised / stainless steel*

SIZE:

Index	A [mm]	B [mm]	C [mm]	d1 [mm]	d2 [mm]	E [mm]	L [mm]
SK 1x63/125	201	161	83	125	63	53	330
SK 1x75/125	201	161	92	125	75	53	330
SK 1x90/125	201	161	107	125	90	53	330
SK 1x63/100	201	161	83	100	63	53	330
SK 1x75/100	201	161	92	100	75	53	330

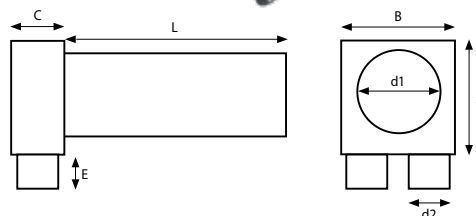


Two Port Plenum Box

MATERIAL: galvanised / stainless steel*

SIZE:

Index	A [mm]	B [mm]	C [mm]	d1 [mm]	d2 [mm]	E [mm]	L [mm]
SK 2x63/125	171	171	83	125	63	53	330
SK 2x75/125	181	201	92	125	75	53	330
SK 2x90/125	201	221	107	125	90	53	330
SK 2x63/100	171	171	83	100	63	53	330
SK 2x75/100	181	201	92	100	75	53	330

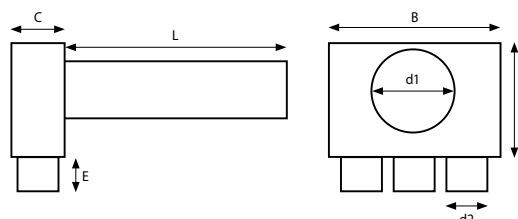


Three Port Plenum Box

MATERIAL: galvanised / stainless steel*

SIZE:

Index	A [mm]	B [mm]	C [mm]	d1 [mm]	d2 [mm]	E [mm]	L [mm]
SK 3x63/125	171	256	83	125	63	53	330
SK 3x75/125	221	301	92	125	75	53	330
SK 3x90/160	201	331	107	160	90	53	330
SK 3x90/200	330	240	106	200	90	53	330



* We also make elements according to individual customer design.

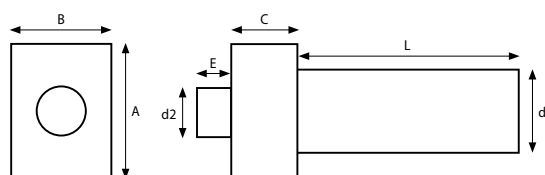
Straight Plenum Boxes

Single Port Straight Plenum Box

MATERIAL: galvanised / stainless steel*

SIZE:

Index	A [mm]	B [mm]	C [mm]	d1 [mm]	d2 [mm]	E [mm]	L [mm]
SK 1x75/125P	201	152	101	125	75	53	330
SK 1x90/125P	201	152	101	125	90	53	330

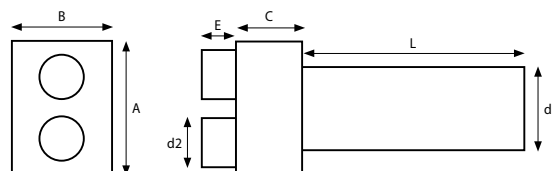


Two Port Straight Plenum Box

MATERIAL: galvanised / stainless steel*

SIZE:

Index	A [mm]	B [mm]	C [mm]	d1 [mm]	d2 [mm]	E [mm]	L [mm]
SK 2x63/125P	201	152	101	125	63	53	330
SK 2x75/125P	201	152	101	125	75	53	330
SK 2x90/125P	221	152	101	125	90	53	330

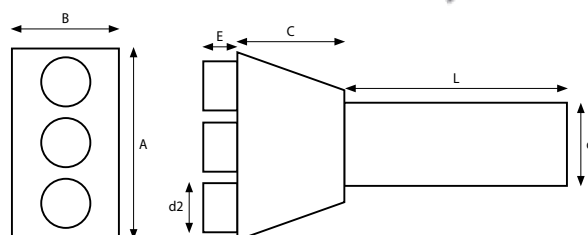


Three Port Straight Plenum Box

MATERIAL: galvanised / stainless steel*

SIZE:

Index	A [mm]	B [mm]	C [mm]	d1 [mm]	d2 [mm]	E [mm]	L [mm]
SK 3x63/125P	281	152	161	125	63	53	330
SK 3x75/125P	281	152	161	125	75	53	330
SK 3x90/125P	331	152	221	125	90	53	330



* We also make elements according to individual customer design.

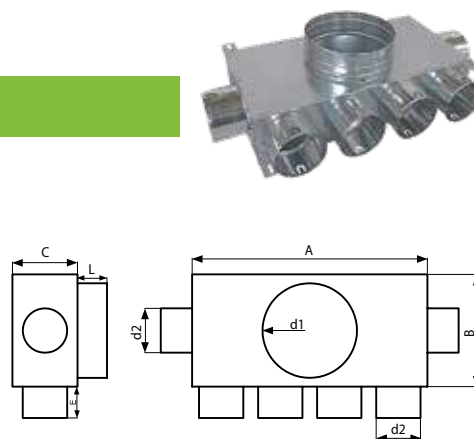
Flat distribution boxes

Six Port Distribution Box

MATERIAL: galvanised / stainless steel*

SIZE:

Index	Type	A [mm]	B [mm]	C [mm]	d1 [mm]	d2 [mm]	E [mm]	L [mm]
SK 6x63/160	standard	341	181	83	160	63	53	50
SK 6x75/160		401	201	92	160	75	53	50
SK 6x75/200		401	251	92	200	75	53	50
SK 6x63/160I	isolated	341	181	83	160	63	53	50
SK 6x75/160I		401	201	92	160	75	53	50
SK 6x75/200I		401	251	92	200	75	53	50

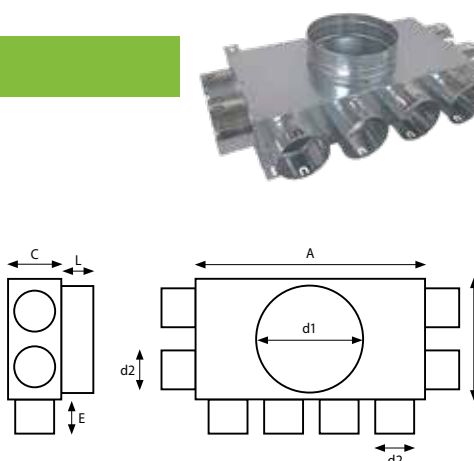


Eight Port Distribution Box

MATERIAL: galvanized / stainless steel*

SIZE:

Index	Type	A [mm]	B [mm]	C [mm]	d1 [mm]	d2 [mm]	E [mm]	L [mm]
SK 8x63/160	standard	341	181	83	160	63	53	50
SK 8x75/160		401	201	92	160	75	53	50
SK 8x75/200		401	251	92	200	75	53	50
SK 8x63/160I	isolated	341	181	83	160	63	53	50
SK 8x75/160I		401	201	92	160	75	53	50
SK 8x75/200I		401	251	92	200	75	53	50

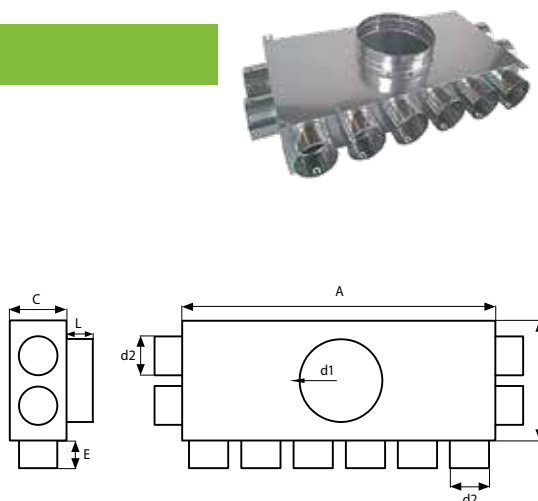


Nine Port Distribution Box

MATERIAL: galvanized / stainless steel*

SIZE:

Index	Type	A [mm]	B [mm]	C [mm]	d1 [mm]	d2 [mm]	E [mm]	L [mm]
SK 10x63/160	standard	511	181	83	160	63	53	50
SK 10x63/200		511	256	83	200	63	53	50
SK 10x75/160		601	251	92	160	75	53	50
SK 10x75/200		601	251	92	200	75	53	50
SK 10x63/160I	isolated	511	181	83	160	63	53	50
SK 10x63/200I		511	256	83	200	63	53	50
SK 10x75/160I		601	251	92	160	75	53	50
SK 10x75/200I		601	251	92	200	75	53	50



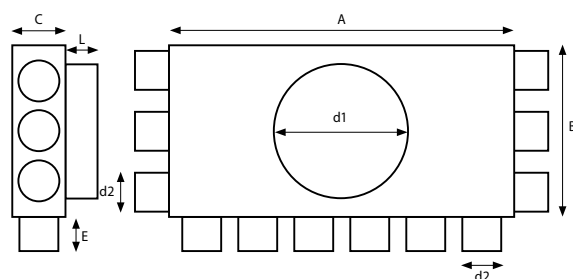
* We also make elements according to individual customer design.

Twelve Port Distribution Box

MATERIAL: galvanised / stainless steel*

SIZE:

Index	Type	A [mm]	B [mm]	C [mm]	d1 [mm]	d2 [mm]	E [mm]	L [mm]
SK 12x63/160	standard	511	256	83	160	63	53	50
SK 12x63/200		511	256	83	200	63	53	50
SK 12x75/160		601	301	92	160	75	53	50
SK 12x75/200		601	301	92	200	75	53	50
SK 12x63/160I	isolated	341	181	83	160	63	53	50
SK 12x63/200I		341	181	83	160	63	53	50
SK 12x75/160I		341	181	83	160	63	53	50
SK 12x75/200I		341	181	83	160	63	53	50

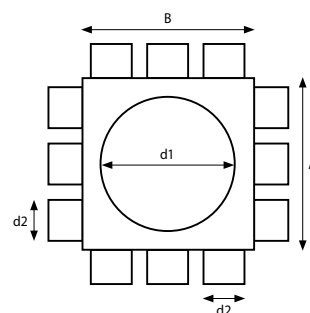


Twelve Port Distribution Box (square)

MATERIAL: galvanised / stainless steel*

SIZE:

Index	Type	A [mm]	B [mm]	C [mm]	d1 [mm]	d2 [mm]	E [mm]	L [mm]
SK 12x63/160KW	standard	256	256	83	160	63	53	50
SK 12x63/200KW		256	256	83	200	63	53	50
SK 12x75/160KW		301	301	92	160	75	53	50
SK 12x75/200KW		301	301	92	200	75	53	50

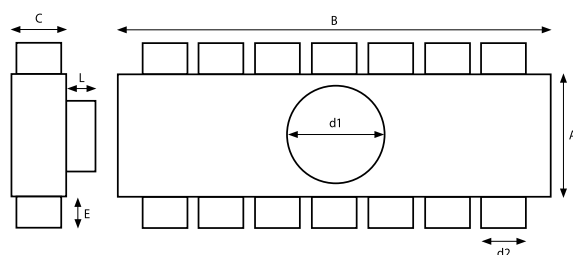


Fourteen Port Distribution Box

MATERIAL: galvanised / stainless steel*

SIZE:

Index	Type	A [mm]	B [mm]	C [mm]	d1 [mm]	d2 [mm]	E [mm]	L [mm]
SK 14x63/160	standard	201	591	83	160	63	53	50
SK 14x63/200		251	591	83	200	63	53	50
SK 14x75/160		201	701	92	160	75	53	50
SK 14x75/200		251	701	92	200	75	53	50
SK 14x63/160I	isolated	201	591	83	160	63	53	50
SK 14x63/200I		251	591	83	200	63	53	50
SK 14x75/160I		201	701	92	160	75	53	50
SK 14x75/200I		251	701	92	200	75	53	50



* We also make elements according to individual customer design.

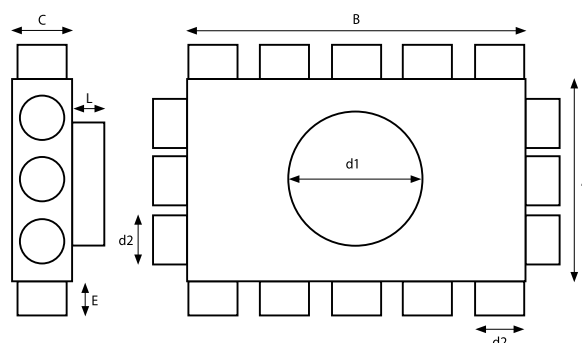
Flat distribution boxes

Sixteen Port Distribution Box

MATERIAL: galvanised / stainless steel*

SIZE:

Index	Type	A [mm]	B [mm]	C [mm]	d1 [mm]	d2 [mm]	E [mm]	L [mm]
SK 16x63/160	standard	256	431	83	160	63	53	50
SK 16x63/200		256	431	83	200	63	53	50
SK 16x75/160		301	501	92	160	75	53	50
SK 16x75/200		301	501	92	200	75	53	50
SK 16x63/160I	isolated	256	431	83	160	63	53	50
SK 16x63/200I		256	431	83	200	63	53	50
SK 16x75/160I		301	501	92	160	75	53	50
SK 16x75/200I		301	501	92	200	75	53	50

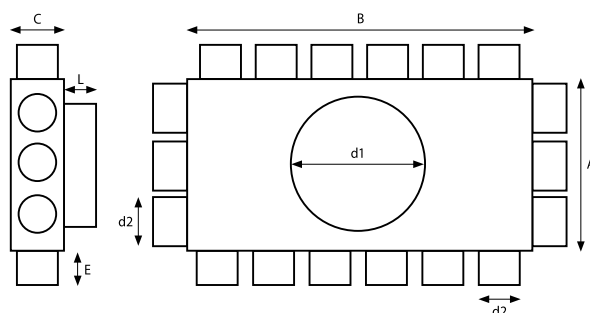


Eighteen Port Distribution Box

MATERIAL: galvanised / stainless steel*

SIZE:

Index	Type	A [mm]	B [mm]	C [mm]	d1 [mm]	d2 [mm]	E [mm]	L [mm]
SK 18x63/160	standard	256	511	83	160	63	53	50
SK 18x63/200		256	511	83	200	63	53	50
SK 18x75/160		301	601	92	160	75	53	50
SK 18x75/200		301	601	92	200	75	53	50
SK 18x63/160I	isolated	256	511	83	160	63	53	50
SK 18x63/200I		256	511	83	200	63	53	50
SK 18x75/160I		301	601	92	160	75	53	50
SK 18x75/200I		301	601	92	200	75	53	50

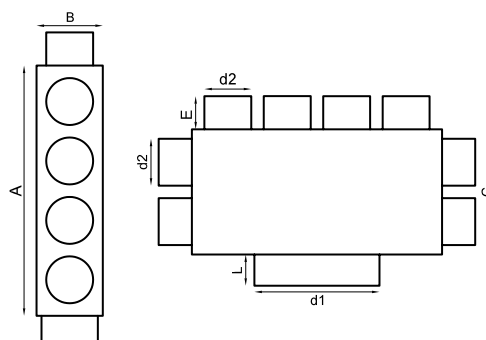


Flat manifolds with rectangular outlet

MATERIAL: galvanised / stainless steel*

SIZE:

Index	A [mm]	B [mm]	C [mm]	d1 [mm]	d2 [mm]	E [mm]	L [mm]
SK 6x90/200X90	447	240	106	200 x 90	90	53	50
SK 8X90/200X90	447	240	106	200 x 90	90	53	50
SK 8X75/200X90	400	200	93	200 x 90	75	53	50
SK 10X75/200X90	600	250	93	200 x 90	75	53	50
SK 12X75/200X90	600	300	93	200 x 90	75	53	50



* We also make elements according to individual customer design.

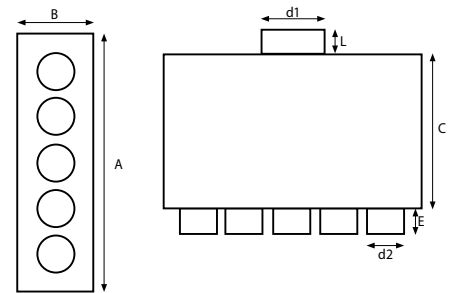
Single row pipe distributors

Five Port Straight Plenum Box

MATERIAL: galvanised / stainless steel*

SIZE:

Index	Type	A [mm]	B [mm]	C [mm]	d1 [mm]	d2 [mm]	E [mm]	L [mm]
SK 5x75/125P	std	501	152	301	125	75	53	50
SK 5x90/160P		601	202	321	160	90	53	50
SK 5x75/125PI	isol.	501	152	301	125	75	53	50
SK 5x90/160PI		601	202	321	160	90	53	50

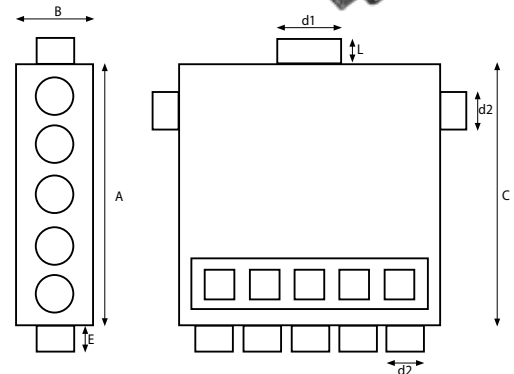


Seven Port Distribution Box with An Adjustable Panel

MATERIAL: galvanised steel

SIZE:

Index	Type	A [mm]	B [mm]	C [mm]	d1 [mm]	d2 [mm]	E [mm]	L [mm]
SK 7x75/125P	std	500	152	501	125	75	53	50



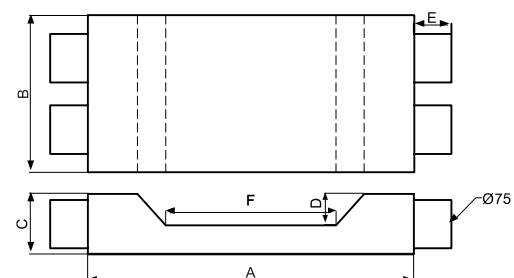
Single and double bottom plate

MATERIAL: galvanised steel

SIZE:

Index	Type	A [mm]	B [mm]	C [mm]	D [mm]	F [mm]	E [mm]	d2 [mm]
SK 1x75 TYP A	standard	370	180	85	54	120	53	75
SK 1x75 TYP B		360	120	85	44	140	53	75
SK 1x75 TYP C		480	120	85	44	260	53	75

Index	Type	A [mm]	B [mm]	C [mm]	D [mm]	F [mm]	E [mm]	d2 [mm]
SK 2x75 TYP A	std	460	221	85	44	260	53	75



* We also make elements according to individual customer design.

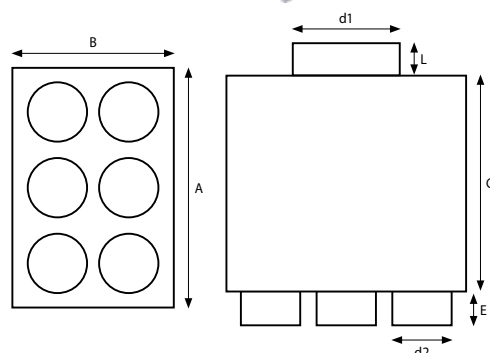
Two-row distribution boxes

Six Port Distribution Box

MATERIAL: galvanised / stainless steel*

SIZE:

Index	Type	A [mm]	B [mm]	C [mm]	d1 [mm]	d2 [mm]	E [mm]	L [mm]
SK 6x75/160D	standard	301	222	301	160	75	53	60
SK 6x90/160D		356	242	321	160	90	53	50
SK 6x75/200D		301	222	301	200	75	53	50
SK 6x90/200D		356	242	321	200	90	53	50
SK 6x75/160DI	isolated	301	222	301	160	75	53	60
SK 6x90/160DI		356	242	321	160	90	53	50
SK 6x75/200DI		301	222	301	200	75	53	50
SK 6x90/200DI		356	242	321	200	90	53	50

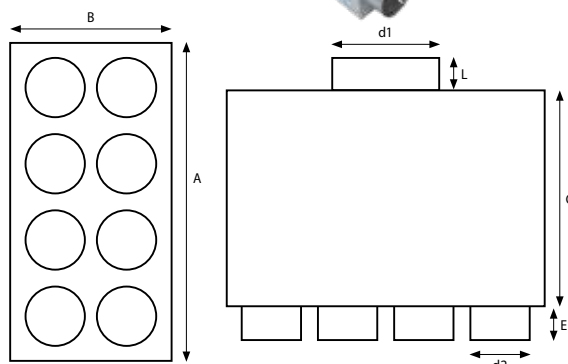


Ten Port Distribution Box

MATERIAL: galvanised / stainless steel*

SIZE:

Index	Type	A [mm]	B [mm]	C [mm]	d1 [mm]	d2 [mm]	E [mm]	L [mm]
SK 8x75/160D	standard	401	222	301	160	75	53	50
SK 8x90/160D		471	242	321	160	90	53	50
SK 8x75/200D		401	222	301	200	75	53	50
SK 8x90/200D		471	242	321	200	90	53	50
SK 8x75/160DI	isolated	401	222	301	160	75	53	50
SK 8x90/160DI		471	242	321	160	90	53	50
SK 8x75/200DI		401	222	301	200	75	53	50
SK 8x90/200DI		471	242	321	200	90	53	50

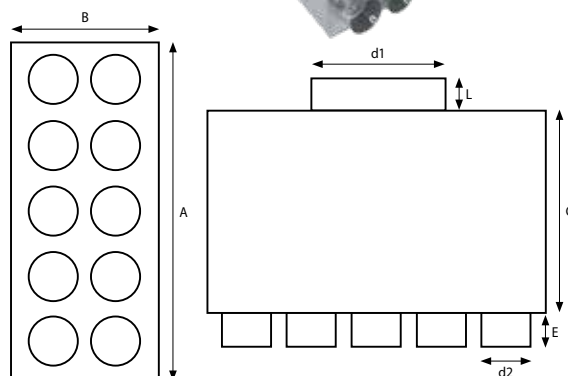


Ten Port Distribution Box

MATERIAL: galvanised / stainless steel*

SIZE:

Index	Type	A [mm]	B [mm]	C [mm]	d1 [mm]	d2 [mm]	E [mm]	L [mm]
SK 10x75/160D	standard	501	222	301	160	75	53	50
SK 10x90/160D		601	242	321	160	90	53	50
SK 10x75/200D		501	222	301	200	75	53	50
SK 10x90/200D		601	242	321	200	90	53	50
SK 10x75/160DI	isolated	501	222	301	160	75	53	50
SK 10x90/160DI		601	242	321	160	90	53	50
SK 10x75/200DI		501	222	301	200	75	53	50
SK 10x90/200DI		601	242	321	200	90	53	50



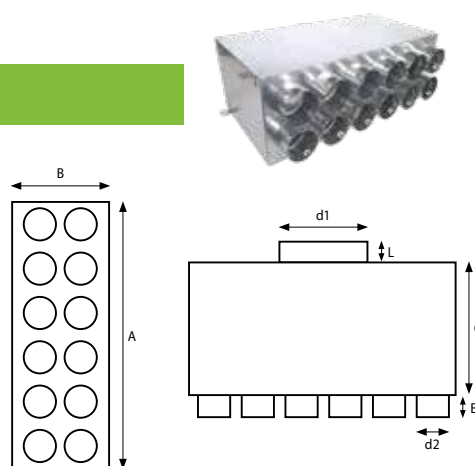
* We also make elements according to individual customer design.

Twelve Port Distribution Box

MATERIAL: galvanised / stainless steel*

SIZE:

Index	Type	A [mm]	B [mm]	C [mm]	d1 [mm]	d2 [mm]	E [mm]	L [mm]
SK 12x75/160D	standard	601	222	301	160	75	53	50
SK 12x90/160D		701	242	321	160	90	53	50
SK 12x75/200D		601	222	301	200	75	53	50
SK 12x90/200D		701	242	321	200	90	53	50
SK 12x75/160DI	isolated	601	222	301	160	75	53	50
SK 12x90/160DI		701	242	321	160	90	53	50
SK 12x75/200DI		601	222	301	200	75	53	50
SK 12x90/200DI		701	242	321	200	90	53	50

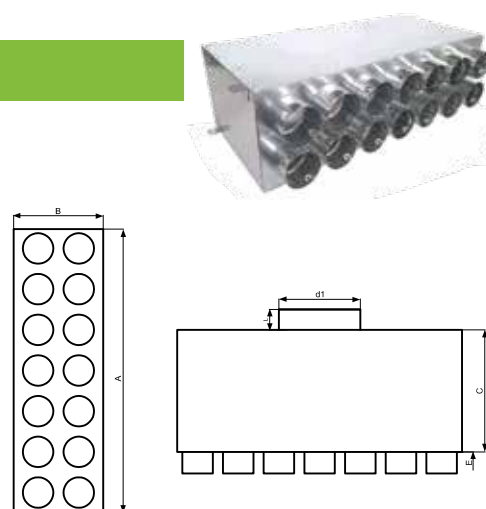


Fourteen Port Distribution Box

MATERIAL: galvanised / stainless steel*

SIZE:

Index	Type	A [mm]	B [mm]	C [mm]	d1 [mm]	d2 [mm]	E [mm]	L [mm]
SK 14x75/160D	std	701	222	301	160	75	53	50
SK 14x75/200D		701	222	301	200	75	53	50
SK 14x75/160DI	isol.	701	222	301	160	75	53	50
SK 14x75/200DI		701	222	301	200	75	53	50

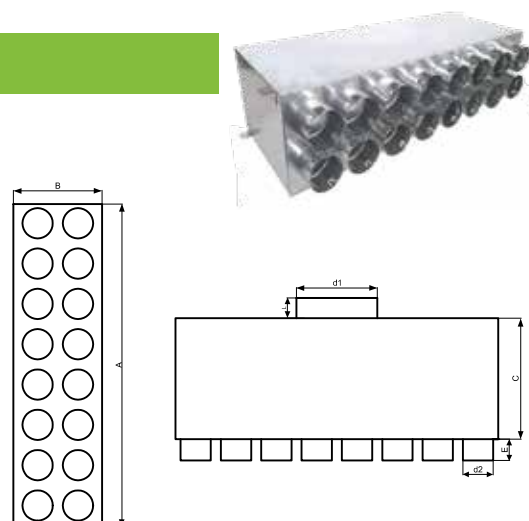


Sixteen Port Distribution Box

MATERIAL: galvanised / stainless steel*

SIZE:

Index	Type	A [mm]	B [mm]	C [mm]	d1 [mm]	d2 [mm]	E [mm]	L [mm]
SK 16x75/200D	std	801	222	301	200	75	53	50
SK 16x75/200DI	isol.	801	222	301	200	75	53	50



* We also make elements according to individual customer design.

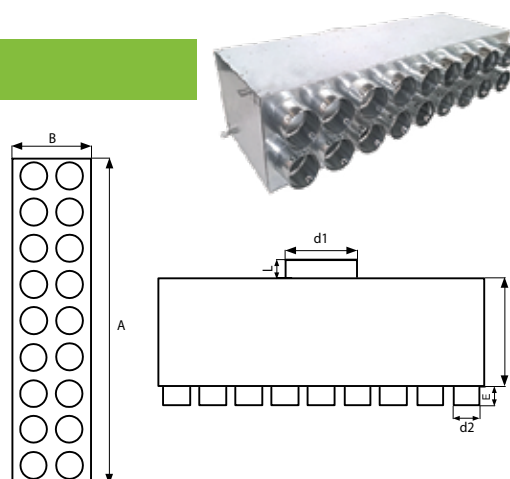
Two-row distribution boxes

Eighteen Port Distribution Box

MATERIAL: galvanised / stainless steel*

SIZE:

Index	Type	A [mm]	B [mm]	C [mm]	d1 [mm]	d2 [mm]	E [mm]	L [mm]
SK 18x75/200D	std	901	222	301	200	75	53	50
SK 18x75/200DI	isol.	901	222	301	200	75	53	50

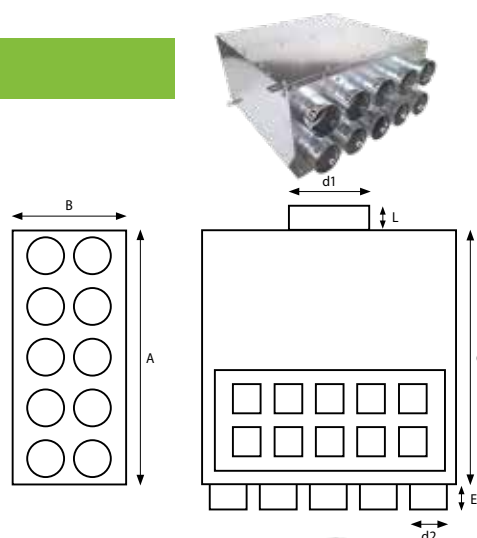


Ten Port Distribution Box with An Adjustable Panel

MATERIAL: galvanised / stainless steel*

SIZE:

Index	Type	A [mm]	B [mm]	C [mm]	d1 [mm]	d2 [mm]	E [mm]	L [mm]
SK 10x75/160P	std	501	257	501	160	75	53	50

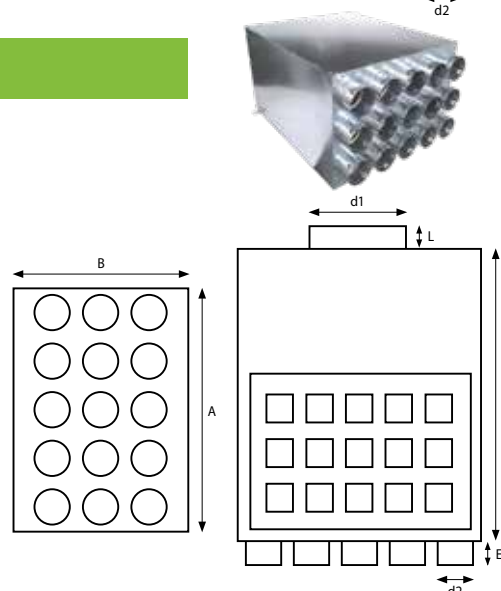


Fifteen Port Distribution Box with An Adjustable Panel

MATERIAL: galvanised / stainless steel*

SIZE:

Index	Type	A [mm]	B [mm]	C [mm]	d1 [mm]	d2 [mm]	E [mm]	L [mm]
SK 15x75/200P	std	501	362	601	200	75	53	50



* We also make elements according to individual customer design.

Connection Fittings

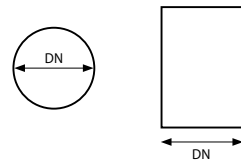
Round Channel Connector

DESCRIPTION: It is used to connect two round flexible ducts.

MATERIAL: plastic

SIZE:

Product name	Index	DN [mm]
Round connector	SK03/Ø	63
Round connector	SK03/Ø	75
Round connector	SK03/Ø	90



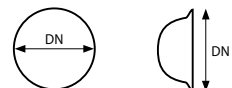
Stopper

DESCRIPTION: It is intended for closing unused ports of the distribution boxes.

MATERIAL: plastic

SIZE:

Product name	Index	DN [mm]
Stopper	SK05/Ø	63
Stopper	SK05/Ø	75
Stopper	SK05/Ø	90
Stopper	SK05/Ø	125



Gasket

DESCRIPTION: It is used to seal the connections between the boxes and the flexible channels.

MATERIAL: rubber

SIZE:

Product name	Index	DN [mm]
Gasket	SK06/Ø	63
Gasket	SK06/Ø	75
Gasket	SK06/Ø	90

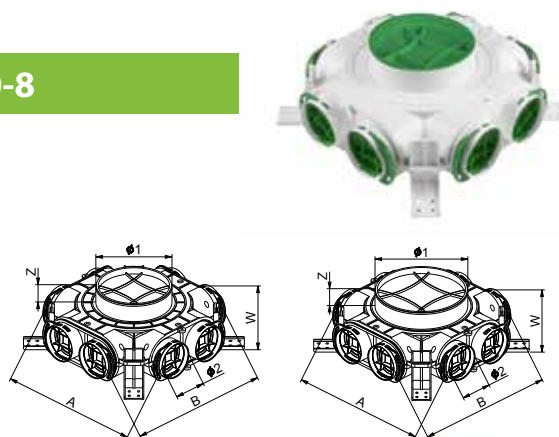


* We also make elements according to individual customer design.

Plastic boxes and elements

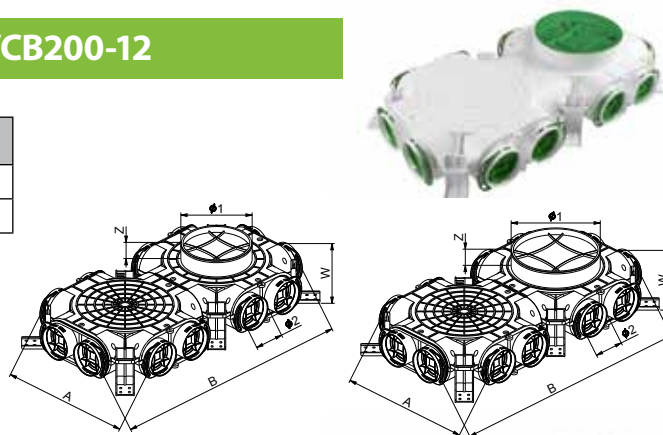
Plastic distribution box VCB160 - 8, VCB200-8

Index	Ø1	Ø2	A [mm]	B [mm]	W [mm]	Z [mm]
VCB160-8	160	75	347	349	104	38
VCB200-8	200	75	347	349	104	38



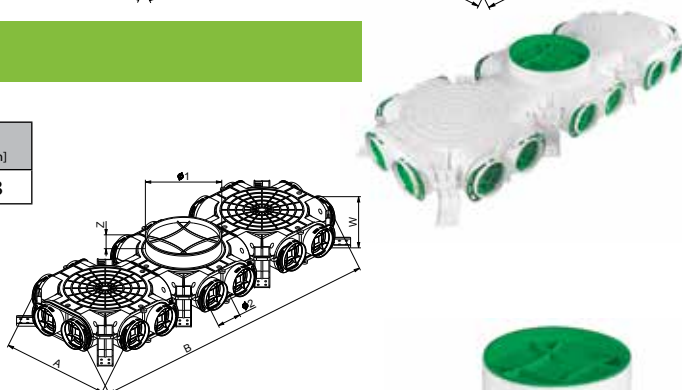
Plastic distribution box VCB160 - 12, VCB200-12

Index	Ø1	Ø2	A [mm]	B [mm]	W [mm]	Z [mm]
VCB160-12	160	75	347	639	104	38
VCB200-12	200	75	347	639	104	38



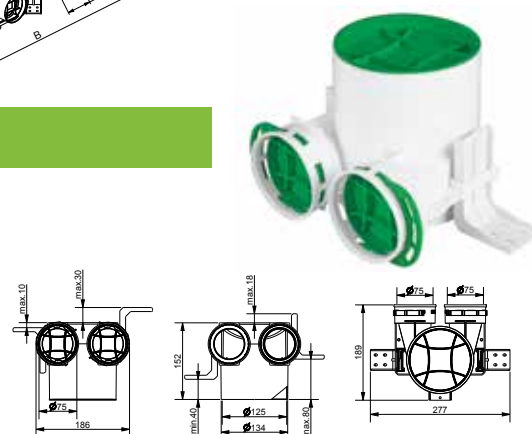
Plastic distribution box VCB200-16

Indeks	Ø1	Ø2	A [mm]	B [mm]	W [mm]	Z [mm]
VCB200-16	160	75	347	927	104	38



Plastic distribution box VPB125

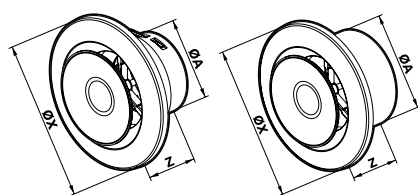
Index	Ø1	Ø2	A [mm]	B [mm]	W [mm]	Z [mm]
VPB125-2	125	75	189	277	152	40-80
VPB125-3	125	75	195	268	152	40-81



* We also make elements according to individual customer design.

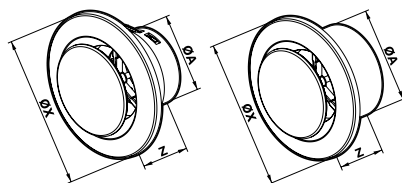
Supply air diffusers VAN

Index	ØA	ØX	Z [mm]
VAN75	75	155	65
VAN125	125	185	60



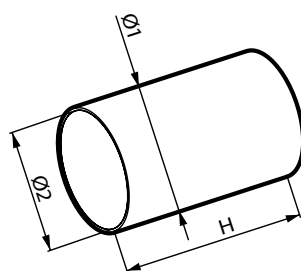
Exhaust air diffusers VAW

Index	ØA	ØX	Z [mm]
VAW75	75	155	65
VAW125	125	185	60



Circular duct

Index	Ø	Ø1	Ø2	H [mm]
KO125-05	125	128	125	500
KO125-10	125	128	125	1000
KO125-15	125	128	125	1500



Cable Knife

Index	Product name
VNK75G/PRX	cable knife green
VNK75R/PRX	cable knife red

* We also make elements according to individual customer design.

Round Channel System

A unique system of metal ducts that allows for fast assembly; the ducts are joined using a push-in joint system which eliminates the need for couplers and reduces installation costs as a consequence. The adjustable elbows allow to adjust the radius in the range from 45° to 90° which eliminates the need to purchase similar fittings with various angles and therefore, allows to save time and money.

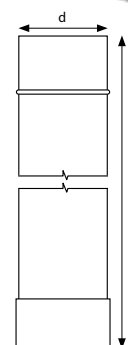
Straight Pipe

DESCRIPTION: The pipe is designed to bring fresh air from the outside to the living space and to remove the used air from living spaces to the outside of the building. Components are joined with a push-in joint system.

MATERIAL: galvanised steel

SIZE:

Product name	Index	d1 [mm]							
Straight pipe	DPO01/ Ø	100	125	150	160	180	200	250	300



45° and 90° Tees

DESCRIPTION: It is used to divide the air stream at 90 and 45 degrees. Components are joined with a push-in joint system.

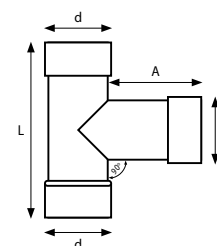
MATERIAL: galvanised steel

SIZE:

Product name	d1 [mm]	L [mm]	A [mm]
Tee	100	260	140
Tee	125	280	140
Tee	150	310	140
Tee	160	320	140

Product name	d1 [mm]	L [mm]	A [mm]
Tee	180	340	140
Tee	200	360	140
Tee	250	450	140
Tee	300	500	140

Note! For 45° tees, please provide DPO06/Ø index



Adjustable Elbow

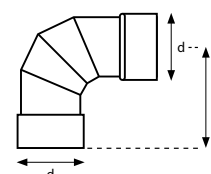
DESCRIPTION: It is intended to adjust the direction of airflow to any angle within the range from 45 to 90 degrees. Components are joined with a push-in joint system.

MATERIAL: galvanised steel

SIZE:

Product name	Index	d1 [mm]	A [mm]
Adjustable Elbow	DPOK07/ Ø	100	150
Adjustable Elbow	DPOK07/ Ø	125	175
Adjustable Elbow	DPOK07/ Ø	150	200
Adjustable Elbow	DPOK07/ Ø	160	210

Product name	Index	d1 [mm]	A [mm]
Adjustable Elbow	DPOK07/ Ø	180	230
Adjustable Elbow	DPOK07/ Ø	200	250
Adjustable Elbow	DPOK07/ Ø	250	300
Adjustable Elbow	DPOK07/ Ø	300	350



* We also make elements according to individual customer design.

Dampers and Reducers

Reducer

OPIS: It is used to change the diameter of a ventilation duct. Connecting elements with a socket system.

MATERIAL: galvanised steel

SIZE:

Product name	Index	d1 [mm]	d2 [mm]
Reducer	DPOK17/ Ø	100	According to the client's order
Reducer	DPOK17/ Ø	125	
Reducer	DPOK17/ Ø	150	
Reducer	DPOK17/ Ø	160	

Product name	Index	d1 [mm]	d2 [mm]
Reducer	DPOK17/ Ø	180	According to the client's order
Reducer	DPOK17/ Ø	200	
Reducer	DPOK17/ Ø	250	
Reducer	DPOK17/ Ø	300	



Damper With a String or a Handle

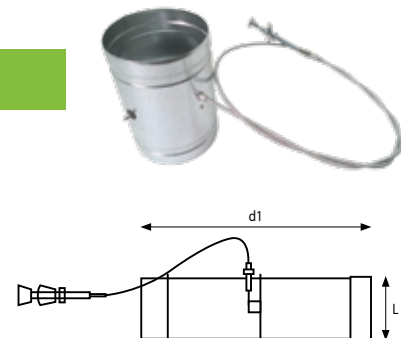
DESCRIPTION: It is used to adjust the air flow by means of a pull cord or handle. Connecting elements with a socket system.

MATERIAL: galvanised steel

SIZE:

Product name	Index	d1 [mm]	L [mm]
Damper	DPO 09/ Ø	100	150
Damper	DPO 09/ Ø	125	185
Damper	DPO 09/ Ø	150	220

Product name	Index	d1 [mm]	L [mm]
Damper	DPO 09/ Ø	160	240
Damper	DPO 09/ Ø	180	270
Damper	DPO 09/ Ø	200	300

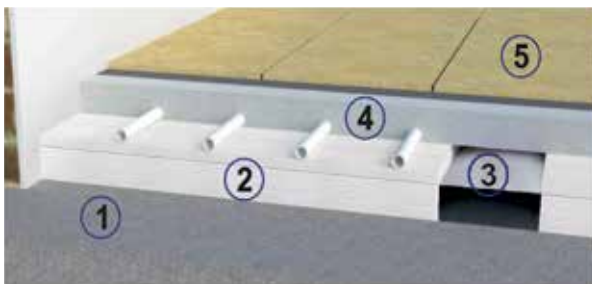


* We also make elements according to individual customer design.

VENT-FLEX PLUS

VENT-FLEX Plus is a system of flat channels that requires only a 50 mm insulation layer. The installation is to be laid down directly on the concrete substrate. The system is equipped with all the components needed to perform even the most complex ventilation system. Quick to install, easy to conceal in ceilings, subfloors, walls.

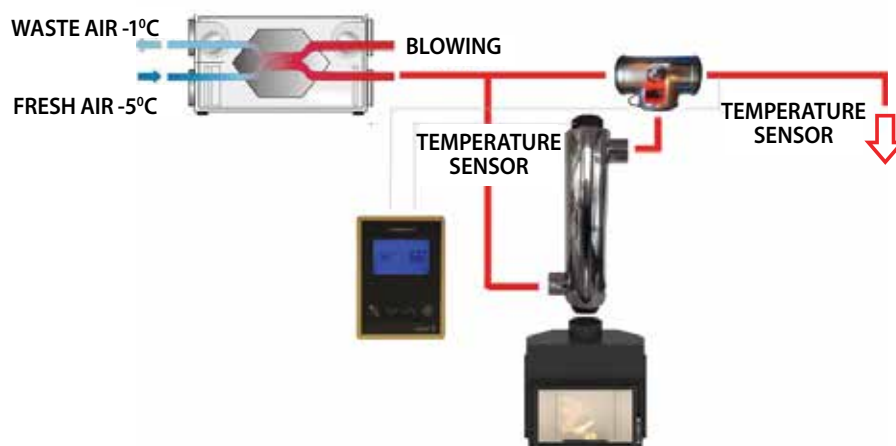
VENT-FLEX Plus is also ideal for use in the forced hot air distribution system from the HAD fireplace.



1. Substrate (e.g. concrete)
2. Insulation of approx. 50 mm
3. Flat ventilation channel 150x50 mm
4. Screed (primary subfloor) approx. 60 mm
5. Top floor finish (tiles, panels, parquet)

Integrated Hot Air Distribution System IHADS - is a new product offered by PRODMAX. It allows for the distribution of heated air from the fireplace chamber via a special diaphragm heat exchange to the recuperation air supply system with continuous flow control.

Thanks to IHADS you may avoid duplication of the recuperation system and conventional HADS, reduce costs and ensure climate comfort, while using the full power of the air handling unit fans. Options include air humidification, ionisation, auxiliary fan, extra filtration.



* We also produce components according to individual customer's



* We also produce components according to individual customer's

VENT-FLEX PLUS

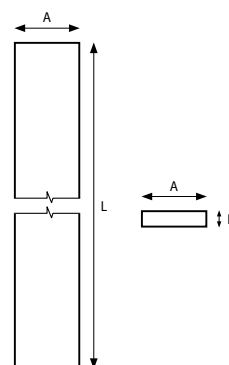
Straight duct

DESCRIPTION: The channel is designed to bring fresh air from the outside to the living space and to remove the used air from living spaces to the outside of the building.

MATERIAL: galvanised steel

SIZE:

Product name	Index	A [mm]	B [mm]	Cena [1 mb]
Straight duct	DPP01/size	200	50	46
Straight duct	DPP02/size	150	50	38



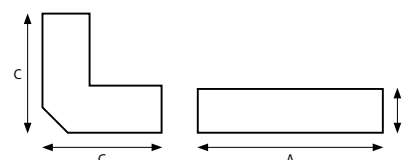
Elbow: wall - ceiling

DESCRIPTION: The elbow is used when the direction of the airflow from the vertical to horizontal and vice versa is to be adjusted.

MATERIAL: galvanised steel

SIZE:

Product name	Index	A [mm]	B [mm]	C [mm]
Elbow: wall-ceiling	DPP03/size	200	50	130
Elbow: wall-ceiling	DPP03/size	150	50	130



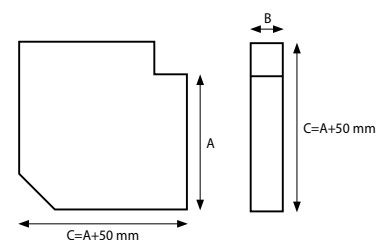
Elbow

DESCRIPTION: The elbow is used when the direction of the airflow is to be adjusted by 90 degrees.

MATERIAL: galvanised steel

SIZE:

Product name	Index	A [mm]	B [mm]	C [mm]
Elbow	DPP05/size	200	50	250
Elbow	DPP05/size	150	50	250



* We also make elements according to individual customer design.

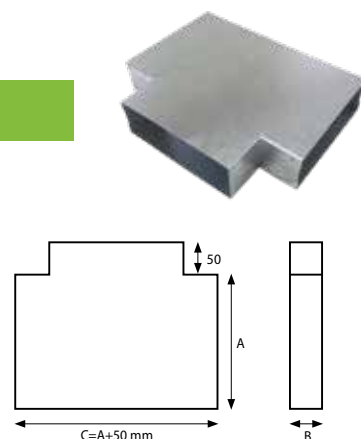
Tee

DESCRIPTION: T-pipe is used to separate air flows.

MATERIAL: galvanised steel

SIZE:

Product name	Index	A [mm]	B [mm]	C [mm]
Tee	DPP06/size	200	50	300



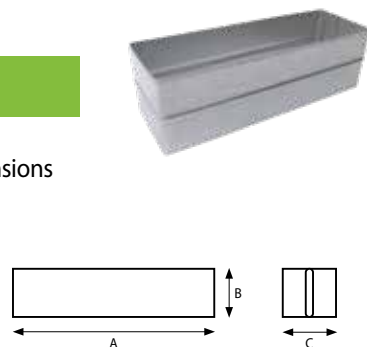
Connector

DESCRIPTION: It is a component to connect all channels and flat elements with dimensions 200x50 and 150x50.

MATERIAL: galvanised steel

SIZE:

Product name	Index	A [mm]	B [mm]	C [mm]
Connector	DPP18/size	200	50	55
Connectoe	DPP18/size	150	50	55



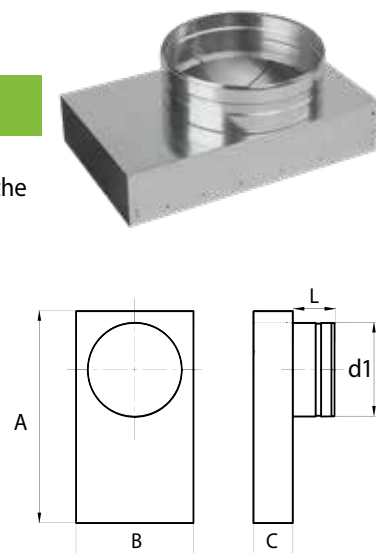
Fitting with round outlet

DESCRIPTION: The fitting is used for connecting a riser supplying or discharging to/from the flat duct and to connect the diffuser.

MATERIAL: galvanised steel

SIZE:

Product name	Index	Króciec – d1	A [mm]	B [mm]	C [mm]	L [mm]
Fitting	DPP16/size	Ø 100	250	150	50	50
Fitting	DPP16/size	Ø 125	250	150	50	50
Fitting	DPP16/size	Ø 160	250	200	50	50



* We also make elements according to individual customer design.

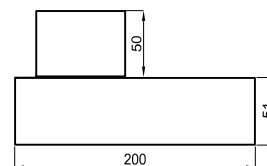
VENT-FLEX Plus

Moulder with transition to Vent-Flex

MATERIAL: galvanised steel

SIZE:

Product name	Index	Port	A [mm]	B [mm]	C [mm]	L [mm]
Kształtka Vent flex	DPP VF/2x75x200x50	75	200	200	51	50
Kształtka Vent flex	DPP VF/2x75x150x50	75	200	150	51	50

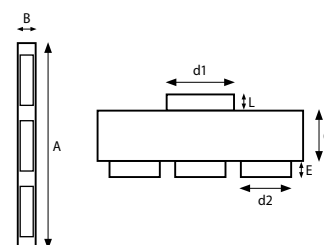


Flat distributor

MATERIAL: galvanised steel

SIZE:

Product name	Index	A [mm]	B [mm]	C [mm]	d1 [mm]	d2 [mm]	E [mm]	L [mm]
Flat distributor	SK 3x150x50/200x50	605	55	150	200	150	50	50

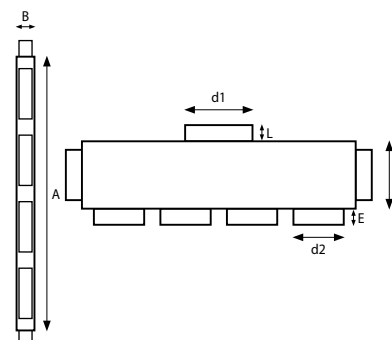


Flat distributor

MATERIAL: galvanised steel

SIZE:

Product name	Index	A [mm]	B [mm]	C [mm]	d1 [mm]	d2 [mm]	E [mm]	L [mm]
Flat distributor	SK 6x150x50/200x50	805	55	200	200	150	50	50



* We also make elements according to individual customer design.

Air Intakes and Exhaust Vents

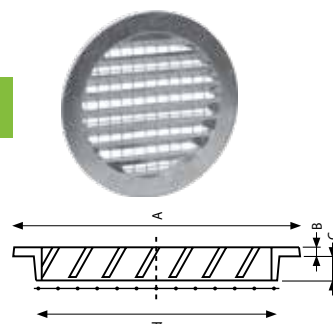
Air intake port / exhaust vent

DESCRIPTION: The air intake is intended to suck fresh air from the outside of the building, while the exhaust vent is intended to eject the used air.

MATERIAL: aluminium

SIZE:

Product name	Index	d [mm]	A [mm]	B [mm]	C [mm]
Air intake port / exhaust ven	DPO60/Ø	160	185	5	15
Air intake port / exhaust ven	DPO60/Ø	200	225	5	15
Air intake port / exhaust ven	DPO60/Ø	250	275	5	15



Spherical air intake / exhaust vent

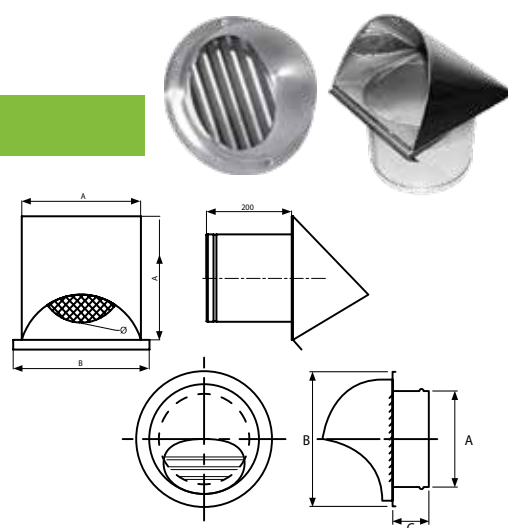
DESCRIPTION: The air intake / exhaust vent with the drip cap.

MATERIAL: chrome-nickel

SIZE:

Product name	Index	d [mm]	A [mm]	B [mm]	C [mm]
Czerpnia kulista	DPO81/ Ø	160	155	192	62
Czerpnia kulista	DPO81/ Ø	200	195	253	62

Product name	Index	d [mm]	A [mm]	B [mm]
Czerpnia z okapnikiem	DPO24/Ø	160	190	235
Czerpnia z okapnikiem	DPO24/Ø	200	230	230
Czerpnia z okapnikiem	DPO24/Ø	250	280	325
Czerpnia z okapnikiem	DPO24/Ø	315	345	390



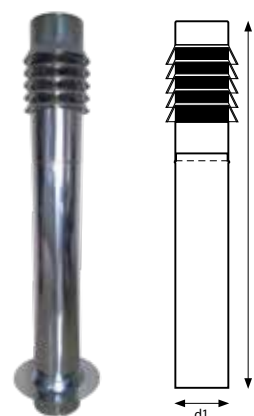
Ground air intake

DESCRIPTION: It is advisable to use the ground air intake in case of the GHE systems.

MATERIAL: stainless steel*

SIZE:

Product name	Index	d1 [mm]	H [mm]
Ground air intake	SK07/Ø	200	1500
Ground air intake	SK07/Ø	250	1500
Ground air intake	SK07/Ø	300	1500



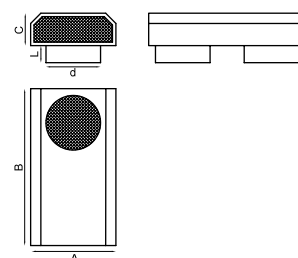
Integrated intake/outlet

DESCRIPTION: Integrated intake/outlet.

MATERIAL: stainless steel*

SIZE:

Index	d [mm]	A [mm]	B [mm]	C [mm]	L [mm]
SW-RE-CZER/160/02	160	253	463	105	50
SW-RE-CZER/200/02	200	293	543	105	50



* We also make elements according to individual customer design.

Insulation foams

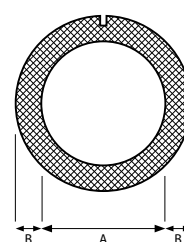
Grey insulation foam

DESCRIPTION: The insulation foam is intended to insulate the flexible ducts in areas where the air supplied to living spaces may be cooled or overheated.

MATERIAL: foamed polyethylene

SIZE:

Product name	Index	A [mm]	B [mm]	L [mb]	Packing [mb]
Grey insulation foam	TER63/13ST	63	13	2	50
Grey insulation foam	TER76/13ST	76	13	2	40
Grey insulation foam	TER89/13ST	89	13	2	26



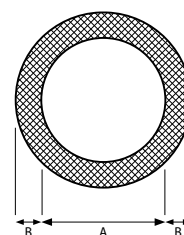
Rubber insulation foam

DESCRIPTION: The insulation foam is intended to insulate the flexible ducts in areas where the air supplied to living spaces may be cooled or overheated.

MATERIAL: rubber

SIZE:

Product name	Index	D [mm]	Insulation thickness [mm]	L [mb]	Packing [mb]
Rubber insulation foam	ACE 63/13	63	13	2	30
Rubber insulation foam	ACE 76/13	76	13	2	28
Rubber insulation foam	ACE 89/13	89	13	2	20



Adhesive rock wool

DESCRIPTION: A self-adhesive rock wool sandwich mat covered with reinforced aluminium foil. The rock wool has a pre-applied adhesive layer over the entire surface protected with a PE film, easy to remove before the installation.

MATERIAL: rock wool

SIZE:

Product name	Index	Width [mm]	Length [mm]	Packing [m ²]
Adhesive rock wool 20 mm	KLIMAFIX 20/10	1 000	1 000	10
Adhesive rock wool 30 mm	KLIMAFIX 30/8	1 000	8 000	8
Adhesive rock wool 40 mm	KLIMAFIX 40/6	1 000	6 000	6
Adhesive rock wool 50 mm	KLIMAFIX 50/5	1 000	5 000	5



* We also make elements according to individual customer design.

Insulated cables

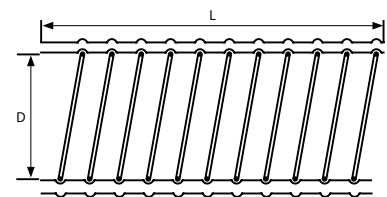
Flex Insulated Aluminium Duct

DESCRIPTION: It is a thermally insulated flexible duct, protecting against heat losses. Hot air distribution with temperature up to 150°C and up to 250°C.

MATERIAL: aluminium, rock wool as insulation coating

SIZE:

Product name	Index	d1 [mm]							
Aluminium conduit l=10 mb	DPO38/Ø	102	127	152	163	203	254	305	315
Aluminium conduit l=5 mb	DPO39/Ø								



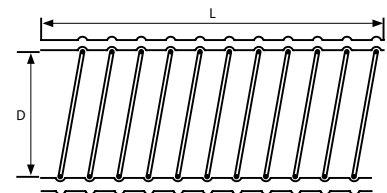
Insulated Aluminium Flexible Duct with Antibacterial Coating

DESCRIPTION: Strong yet very flexible channels for direct and quick connection of the recuperator to the system. Recommended for air supply systems in places, where high hygienic quality of the air is required, such as, kindergartens, schools and single-family houses, especially in case of household members susceptible to allergies.

MATERIAL: polyethylene with fungicide and bactericide, reinforced with non woven fabric and steel spiral; on the outside - aluminium foil laminated with polyethylene

SIZE:

Product name	Index	d1 [mm]							
Aluminium conduit l=10 mb	DPOI38/Ø	102	127	152	163	203	254	305	315



* We also make elements according to individual customer design.

Diffusers

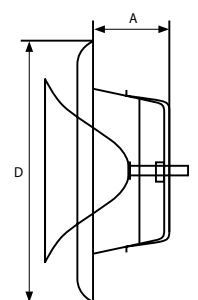
Intake Diffuser

DESCRIPTION: It allows for air supply to a room - full control.

MATERIAL: galvanised steel, powder painting

SIZE:

Product name	Index	xd1 [mm]							
Intake Diffuser	DPO30/Ø	100	125	150	160	180	200	250	300



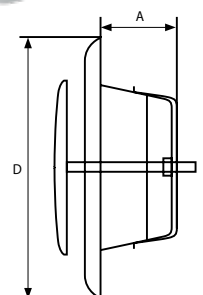
Exhaust Diffuser

DESCRIPTION: It allows for air exhaust to a room - full control.

MATERIAL: galvanised steel, powder painting

SIZE:

Product name	Index	d1 [mm]							
Exhaust Diffuser	DPO31/Ø	100	125	150	160	180	200	250	300



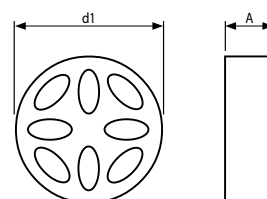
Round Damper with the Silencing Function

DESCRIPTION: Control damper with a silencer. It is intended to control the airflow and to function as a silencer. You can combine them in a series.

MATERIAL: polyurethane

SIZE:

Product name	Index	d1 [mm]	A [mm]
Damper	SK 02/100	100	50
Damper	SK 02/125	125	50



* We also make elements according to individual customer design.

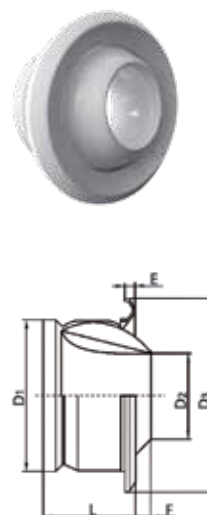
Long range nozzle

DESCRIPTION: KHA long range nozzles are used in high rooms with large volumes such as theatres, cinemas and industrial halls. With a high volume flow there is The high volume flow rate results in a low sound pressure level. The KHA nozzle can be used for both high and low volume flow rates. It is possible to use the nozzle for both horizontal and vertical discharge. The nozzle can be used for both horizontal and vertical discharge. The design of the swivel lenticular element enables. The design of the lenticular swivel element allows the air discharge angle to be changed by 30° in any direction without. The design of the lenticular swivel element enables changing the air discharge angle by 30° in any direction without changing the resistance and acoustic power. The KHA nozzle has a nipple dimension.

MATERIAL: aluminium, powder painting RAL 9016 (white)

SIZE:

Product name	Index	d1 (mm)	d2 (mm)	d3 (mm)	E (mm)	F (mm)	L (mm)
Long range nozzle	KHA	100	55	148	20	2	95
Long range nozzle	KHA	125	64	185	10	4	89
Long range nozzle	KHA	160	82	210	21	10	123
Long range nozzle	KHA	200	108	273	16	14	127
Long range nozzle	KHA	250	135	301	24	17	175
Long range nozzle	KHA	315	180	380	25	30	180
Long range nozzle	KHA	400	230	483	24	47	223
Long range nozzle	KHA	500	255	625	47	50	270



Filters for air handling units

Type of panel	Type of filter	Index	Size (mm)
PRO MAX 400 V/H / PRO MAX 600 H	F7	SW-RE-FIL/195X500X45-F7	198x500x45
	G4	SW-RE-FIL/198X500X45 G4	198x500x45
PRO MINI 300 V/H	F7	SW-RE-FIL/360X106X30-F7	106x360x30
	G4	SW-RE-FIL/360X106X30-G4	106x360x30
AIR EXPERT 400/600 V	F7	SW-RE-FIL/299X233X23/F7	299x233x23
	M5	SW-RE-FIL/299X233X23/M5	299x233x23
AIR EXPERT 400/600 H	F7	SW-RE-FIL/310X370X23-F7	310x368x23
	M5	SW-RE-FIL/310X370X23-M5	310x368x23



* We also make elements according to individual customer design.

Mounting Materials

Perforated strap

DESCRIPTION: The perforated strap is intended to suspend or mount galvanised pipes in the channel - ventilation systems.

MATERIAL: perforated galvanised steel strap

SIZE:

Product name	Index	Packing [mb]
Perforated strap	SK08	25



Band Clip with Specific Range of Operation

DESCRIPTION: The band clip is intended for tight coupling of flexible ducts with ports of the recuperator and distribution boxes.

MATERIAL: galvanised steel

SIZE:

Elements	Index	Packing
Opaska zaciskowa – taśma [30 m]	OZ23	1 mb
Zacisk	OZ24	1 szt.
Taśma zaciskowa – cybantowa [1 m]	OZ25	1 szt.



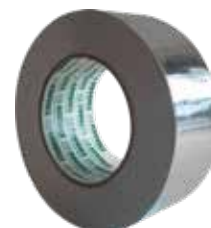
Self-Adhesive Aluminium Insulating Tape

DESCRIPTION: The non-reinforced aluminium tape, flame resistant up to the temperature of 150 degrees.

MATERIAL: aluminium on paper backing, adhesive

SIZE:

Product name	Index	Packing [mb]
Aluminium tape	SK04/50x25	25



* We also make elements according to individual customer design.

Air Handling Units

PRODMAX Air Handling Units are complete ventilation units for filtration and fresh air supply to the rooms, as well as for the removal of polluted air. At the same time, the exhaust air heats the fresh air supplied via a counter-current plate heat exchanger with high heat recovery efficiency. All models are designed for connection with round ventilation ducts.



The important factors for selection of the air handling units for our customers include:

- **Heat Exchanger**

The most efficient and reliable heat exchanger is cross-, counter-flow polystyrene exchanger with high heat exchange efficiency, with efficiency of 98% of the reputable Dutch RECAIR Company, which has many years of experience, offering its products to the best air handling unit manufacturers in the market.

- **Fans**

The fans are equipped with the electronically commutated (EC) motors of the renowned German EBM PAPST Company with high efficiency to guarantee reliability and energy-saving quiet operation. They are equipped with the external rotor and backward bent blades. These types of motors are at present the most innovative energy saving solutions. EC motors provide high performance and control over the full range of the fan speed. Undoubtedly, high efficiency reaching 90% is the advantage of the electronically commutated motors.

- **By-pass**

The offered units are equipped with a bypass, providing room cooling if required, thanks to the direct supply of cool air to rooms from the outside in the summer without the need to replace the heat exchanger with summer cassettes which, from the perspective of time and operation, is quite troublesome.

- **Regulation**

Advanced automation allows for the fine set-up of control panel parameters for the current system and prevailing weather conditions. Continuous fan speed control, setting time schedule, anti-freeze control, by-pass control are just some of the features of the controller to optimise the unit operation.

NOTE: In our offer we have many other air handling units with a wide range of performance, efficiency, for details ask your sales representative.

* other air handling units available

Air Handling Units

Air Handling Units – technical specifications



TECHNICAL CHARACTERISTICS	EKO 250 H (HEKO)	EKO 250 V (VEKO)	PRO MINI 300 V/H	PRO MAX 400 V
Voltage [V/Hz]	1 x 230 V	1 x 230 V	1 x 230 V	1 x 230 V
Maximum fan power	2 szt x 90 W	1 szt x 90 W	2 szt x 170 W	2 szt x 149 W
Maximum fan current consumption [A]	2x0,88 A	2x0,88 A	2x1,75 A	2x1,09 A
Revolutions [min-1]	4230	4230	4000	1390
Max. temperature of pumped air [0 C]	-20 do+50	-20 do+50	-20 do 60	-20 do+50
Type of exchanger	cross-flow counter-current	cross-flow counter-current	cross-flow counter-current	cross-flow counter-current
Maximum exchanger efficiency [%]	do 90 %	do 90 %	do 90 %	do 98 %
Exchanger material	polystyrene	polystyrene	aluminium	polystyrene
Housing material	galvanized steel (painted)	galvanized steel (painted)	painted steel	painted steel
Insulation	6 mm, foam rubber	6 mm, foam rubber	20 mm, mineral wool	40 mm, mineral wool
Filter: inlet	G4	G4	M5	M5
Filter: exhaust	G4	G4	G4	G4
Air connection stubs diameter	Ø125 mm	Ø125 mm	Ø125 mm	Ø160 mm
Weight [kg]	16,3	16,3	28	68
Flow rate at 100Pa [m³/h]	265	260	290 (V)/280 (H)	470
Controller type	A4	A4	A4	A4
Dimensions [length x width x height]	682x474x243	583x243x471	725x245x585	878x745x677
Pre-heater power [kW]	NONE	NONE	0,5	3,0
Pre-heater current consumption [A]	NONE	NONE	2,17	13,0
Induction heater power [kW]	NONE	NONE	NONE	NONE
Induction heater current consumption [A]	NONE	NONE	NONE	NONE
Total unit power [kW]	0,18	0,09	0,84	3,3
Total unit current consumption [A]	0,8	0,4	3,8	14,5
Bypass	NONE	NONE	YES	YES
Heat exchanger	counterflow cross-flow ENTALPIC	counterflow cross-flow ENTALPIC	counterflow cross-flow RECUTECH	counterflow cross-flow CORE
			enthalpic CORE (OPTIONAL)	enthalpic CORE (OPTIONAL)
Fans	EC fans	EC fans	EC fans	EC fans with technology CONSTANT FLOW
Internet module	NONE	NONE	OPTIONAL	OPTIONAL

* other air handling units available

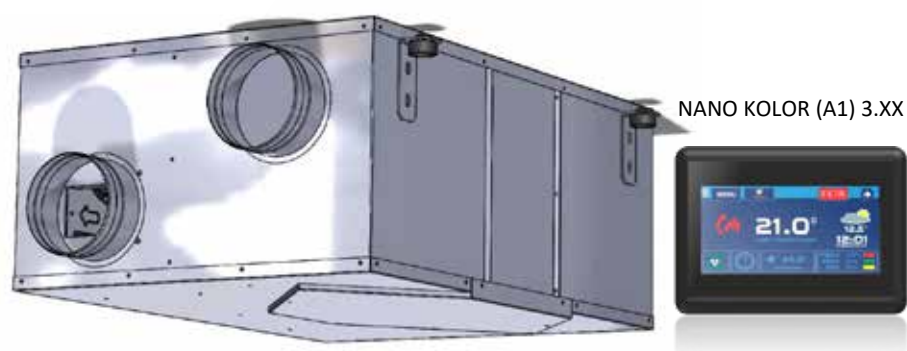
Air Handling Units – technical specifications



TECHNICAL CHARACTERISTICS	PRO MAX 400 H	PRO MAX 600 H	AIR EXPERT 400 H	AIR EXPERT 600 H	AIR EXPERT 400 V	AIR EXPERT 600 V
Voltage [V/Hz]	1 x 230 V	1 x 230 V	1 x 230 V	1 x 230 V	1 x 230 V	1 x 230 V
Maximum fan power	2 szt x 149 W	2 szt x 230 W	2 szt x 230 W	2 szt x 230 W	2 szt x 170 W	2 szt x 170 W
Maximum fan current consumption [A]	2x1,09 A	2x1,8 A	2x1,75A	2x1,8 A	2x0,74 A	2x0,74 A
Revolutions [min-1]	1390	2400	2400	2400	3400	3400
Max. temperature of pumped air [0 C]	-20 do+50	-20 do+50	-20 do+50	-20 do+50	-20 do+50	-20 do+50
Type of exchanger	cross-flow counter-current	cross-flow counter-current	cross-flow counter-current	cross-flow counter-current	cross-flow counter-current	cross-flow counter-current
Maximum exchanger efficiency [%]	do 98 %	do 98%	do 98%	do 98%	do 98%	do 98%
Exchanger material	polystyrene	polystyrene	polystyrene	polystyrene	polystyrene	polystyrene
Housing material	painted steel	painted steel	EPP/painted steel	EPP/painted steel	EPP/painted steel	EPP/painted steel
Insulation	40 mm, mineral wool	40 mm, mineral wool	EPP	EPP	EPP	EPP
Filter: inlet	M5	M5	M5	M5	M5	M5
Filter: exhaust	G4	G4	G4	G4	G4	G4
Air connection stubs diameter	Ø200 mm	Ø200 mm	Ø160 mm	Ø200 mm	Ø200 mm	Ø200 mm
Weight [kg]	94	93	45	45	32	32
Flow rate at 100Pa [m³/h]	485	655	420	615	420	-
Controller type	A4	A4	A4	A4	A4	A4
Dimensions [length x width x height]	1178x745x722	1178x745x722	1205x797x430	1205x797x430	1075x770x602	1075x770x602
Pre-heater power [kW]	1,7	1,7	3	3	2	2
Pre-heater current consumption [A]	4,3	7,39	13	13	8,69	8,69
Induction heater power [kW]	NONE	NONE	NONE	NONE	NONE	NONE
Induction heater current consumption [A]	NONE	NONE	NONE	NONE	NONE	NONE
Total unit power [kW]	2	2,16	3,46	3,46	2,3475	2,3475
Total unit current consumption [A]	9,5	9,5	15	15	15,39	15,39
Bypass	YES	YES	YES	YES	YES - AUTOMATIC	YES - AUTOMATIC
Heat exchanger	counterflow cross-flow CORE	counterflow cross-flow CORE	counterflow cross-flow CORE	counterflow cross-flow CORE	counterflow cross-flow CORE	counterflow cross-flow CORE
	enthalpic CORE (OPTIONAL)	enthalpic CORE (OPTIONAL)	enthalpic CORE (OPTIONAL)	enthalpic CORE (OPTIONAL)	RSP+16-500-H-T-29)	RS160ND - H500 MN.
Fans	EC fans with technology CONSTANT FLOW	EC fans	EC fans	EC fans	EC fans	EC fans
Internet module	YES	YES	YES	YES	YES	YES

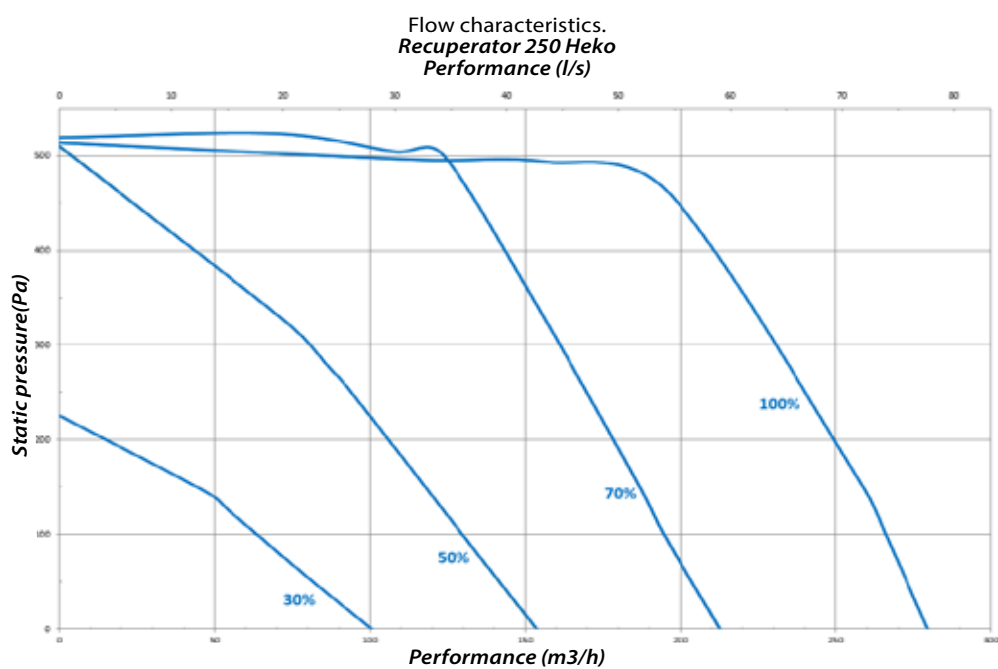
* other air handling units available

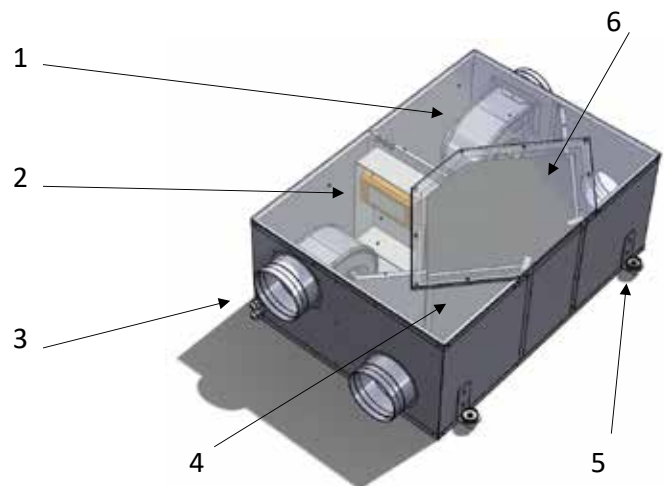
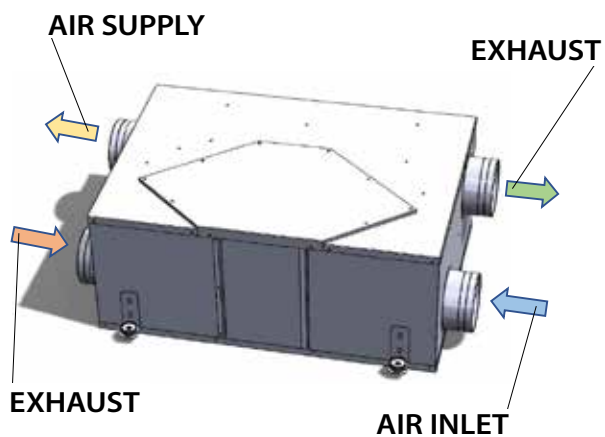
Recuperator 250 Heko (CLASSIC)



Equipment depending on version:

EQUIPMENT VERSION				
	Thermostat: NANO ONE	Thermostat: NANO KOLOR	Housing: galvanized sheet metal	Housing: galvanised sheet lacquered powder coated
BASIC	V	–	V	–
CLASSIC	–	V	V	–
PREMIUM	–	V	–	V

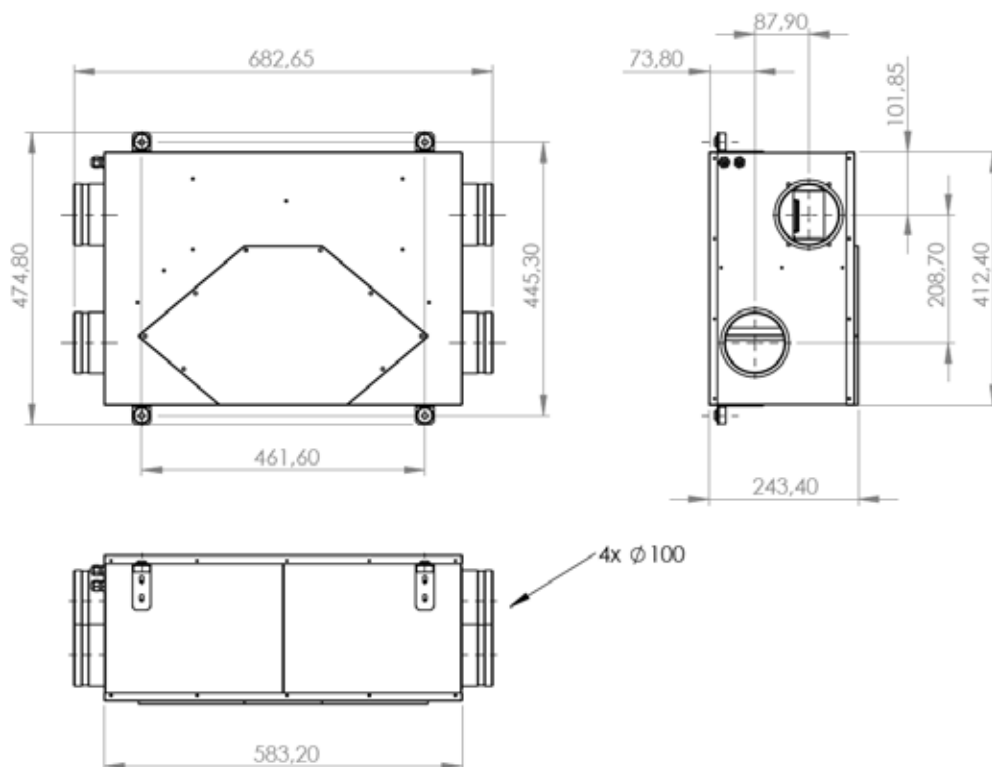




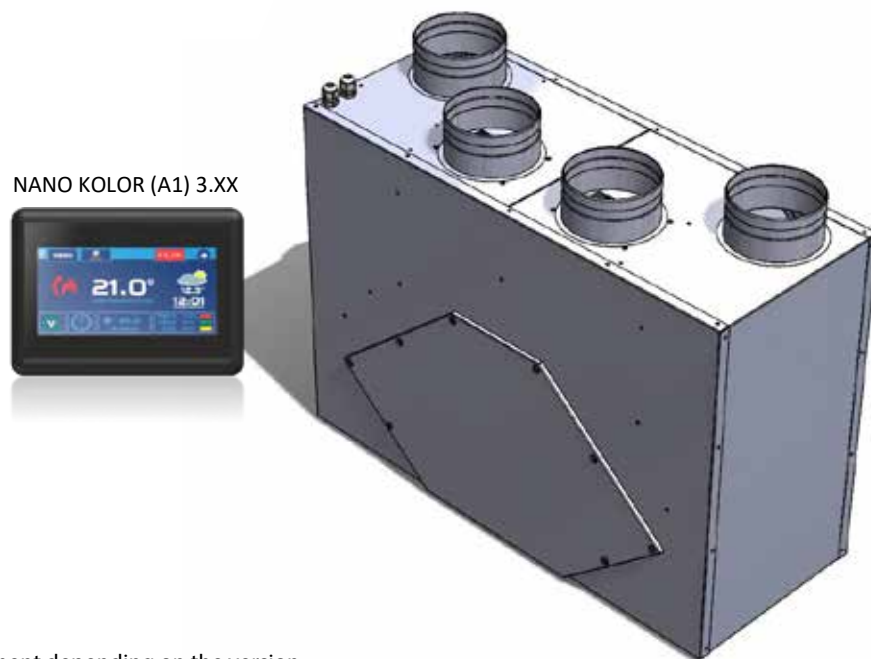
Casing made of galvanized sheet metal
galvanized sheet metal, fully insulated on the inside
fully insulated on the inside.

Total weight: 16,3kg.

1. Fans: RG11R-ECblue. 90W. 0,74-0,88A.
2. COMPIT control unit, AERO_4
3. Recuperation system connections Ø100
4. Exchanger protection filters x2.
5. Mounting bracket x4.
6. Enthalpy heat exchanger of cross-flow, counter-current design.



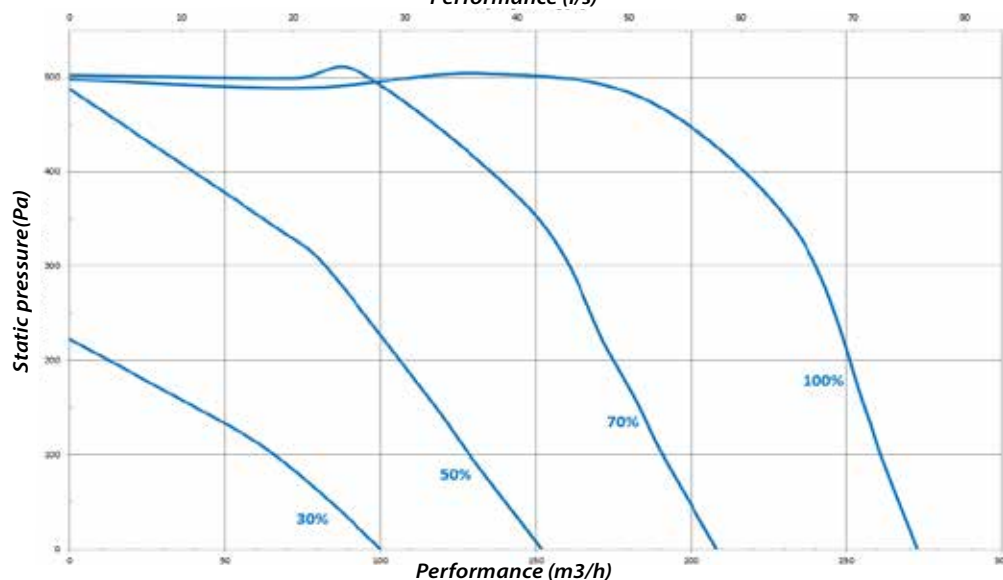
Recuperator 250 Veko (CLASSIC)

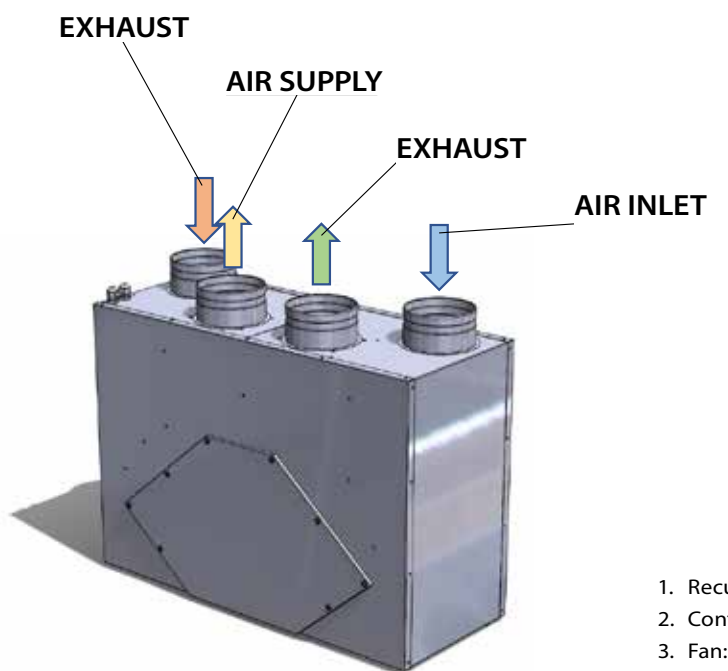


Equipment depending on the version:

VERSION	EQUIPMENT			
	Thermostat: NANO ONE	Thermostat: NANO KOLOR	Housing: galvanized sheet metal	Housing: galvanised sheet lacquered powder coated
BASIC	V	–	V	–
CLASSIC	–	V	V	–
PREMIUM	–	V	–	V

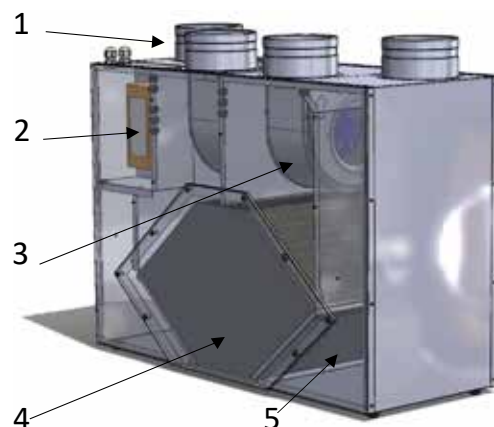
Flow characteristics.
Recuperator 250 Veko
Performance (l/s)



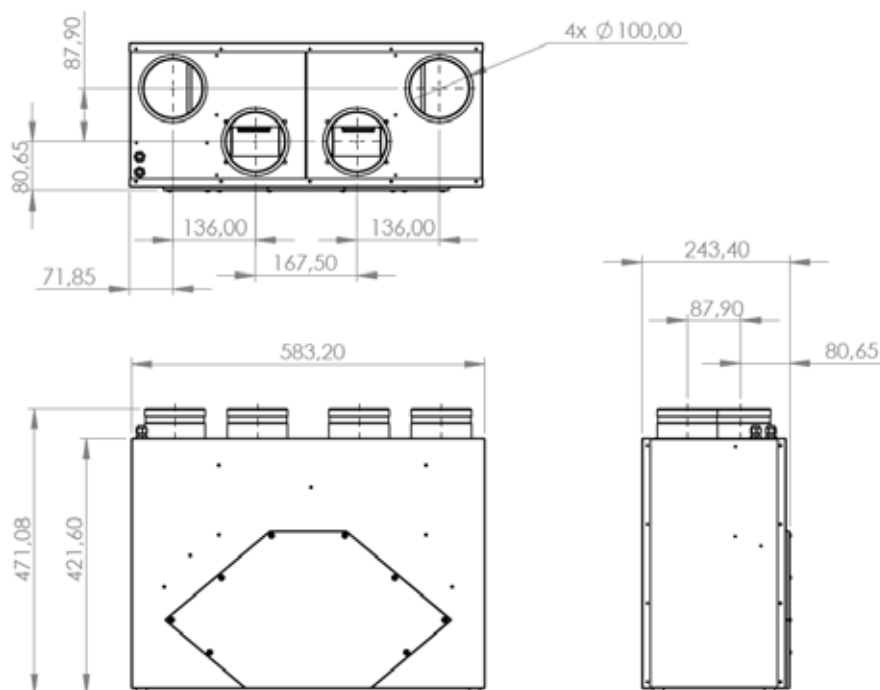


Casing made of galvanized sheet metal
galvanized sheet metal, fully insulated on the inside
fully insulated on the inside.

Total weight: 16,3kg.



1. Recuperation system connections Ø100.
2. Control system COMPIT, AERO_4
3. Fan: RG11R-ECblue. 90W. 0,74-0,88A.
4. Heat exchanger, enthalpy. Cross-flow heat exchanger.
5. Filter for exchanger protection.

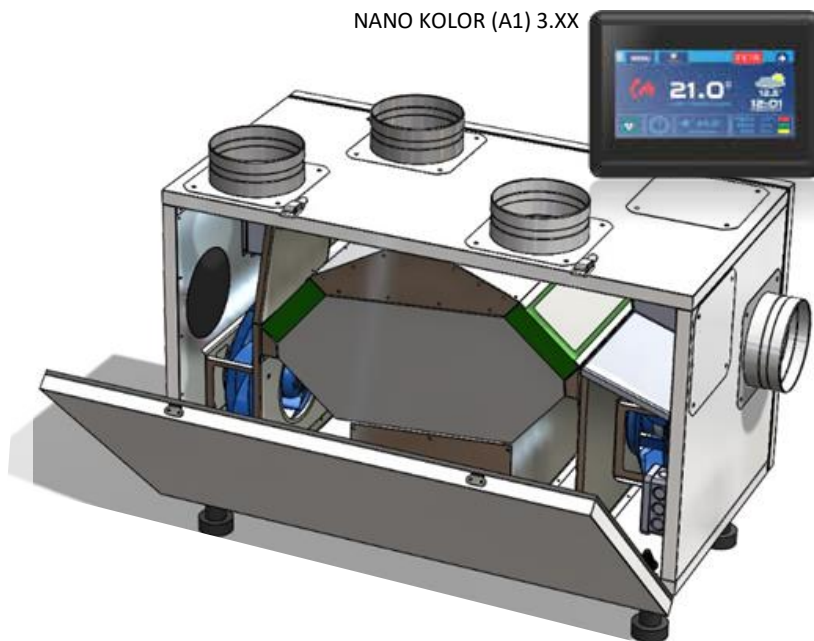


PRO MINI 300 V/H (CLASSIC)

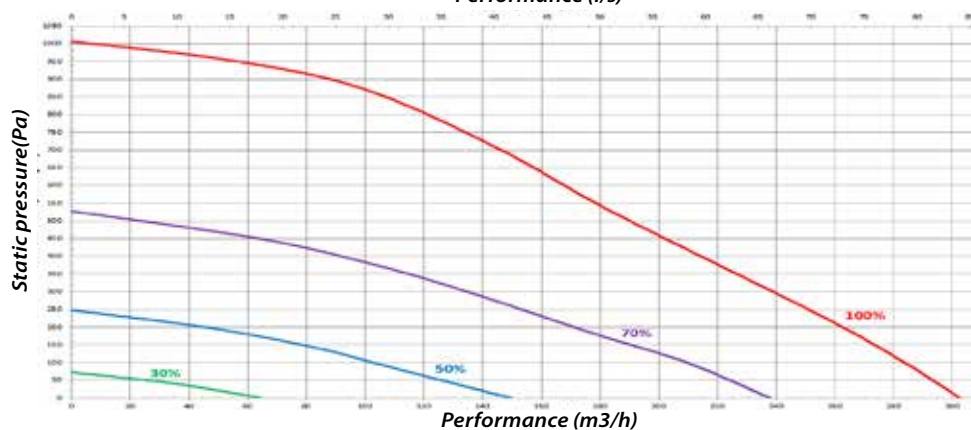
Equipment depending on the version:

VERSION	EQUIPMENT		Cross-flow, counter-current heat exchanger	Bypass Mechanical	Bypass Automatic	Per-heater M - 500W	Internet module
	Heat exchanger counterflow cross-flow	Heat exchanger ENTALPIC					
BASIC	V	-	V	-	-	-	
CLASSIC	V	-	-	V	V	-	
PREMIUM	-	V	-	V	V	V	

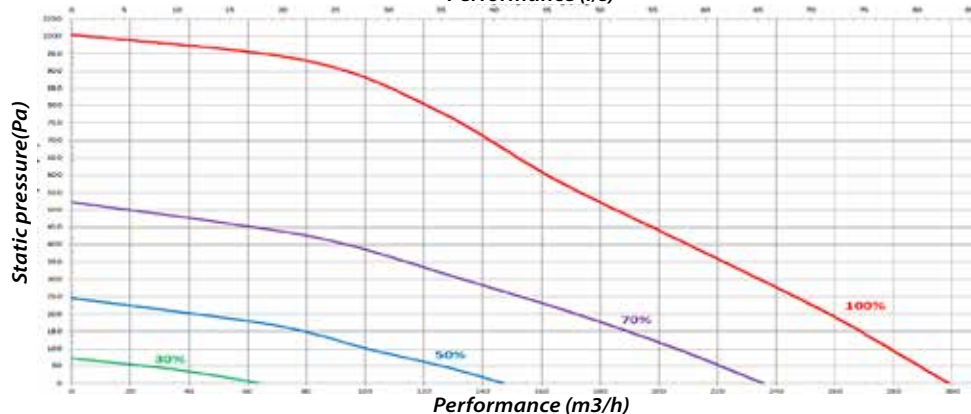
NANO KOLOR (A1) 3.XX

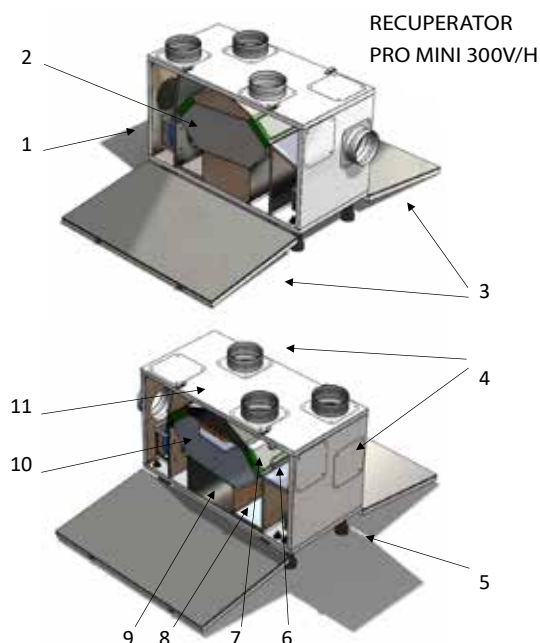


Recuperator PRO MAX 300 V
Performance (l/s)



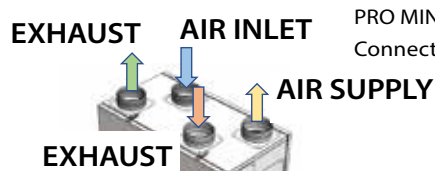
Recuperator PRO MAX 300 H
Performance (l/s)



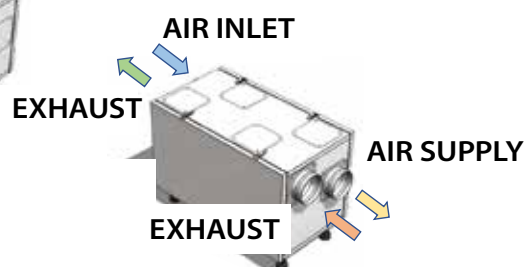


1. Fans: RH19V-4IP.Z8.AR RADIAL 190 VPRO WITH EC055 MOTOR. 170W. 1,75-1,45A.
2. Cross-flow, counter-current heat exchanger: REK+17-240-22
3. Flaps, both front and back opening.
4. Connections Ø125mm. with possibility of horizontal or vertical connection to the system.
5. Feet, height adjustable.
6. Preheater (M - 500W).
7. High class filters:
Exhaust - M5
Exhaust - G4.
8. Drip tray.
9. Control: COMPIT, AERO_4
10. Bypass depending on version:
Automatic - controlled by BELIMO CM230 electric actuator
Mechanical - operated manually with an adjustable lever.
11. Casing made of galvanized sheet metal, powder-painted, white color

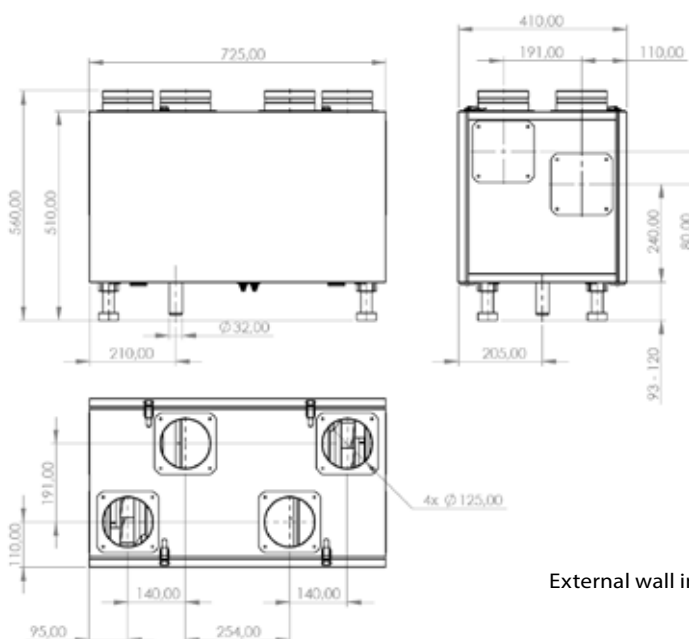
Total weight: 35kg.



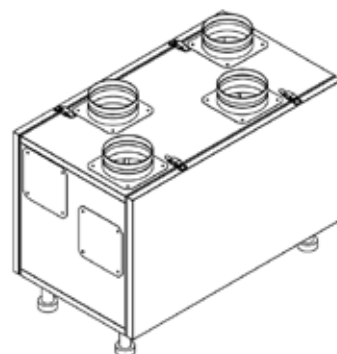
PRO MINI 300V (CLASSIC)
Connection channels VERTICAL



PRO MINI 300H (CLASSIC)
Connection channels HORIZONTAL

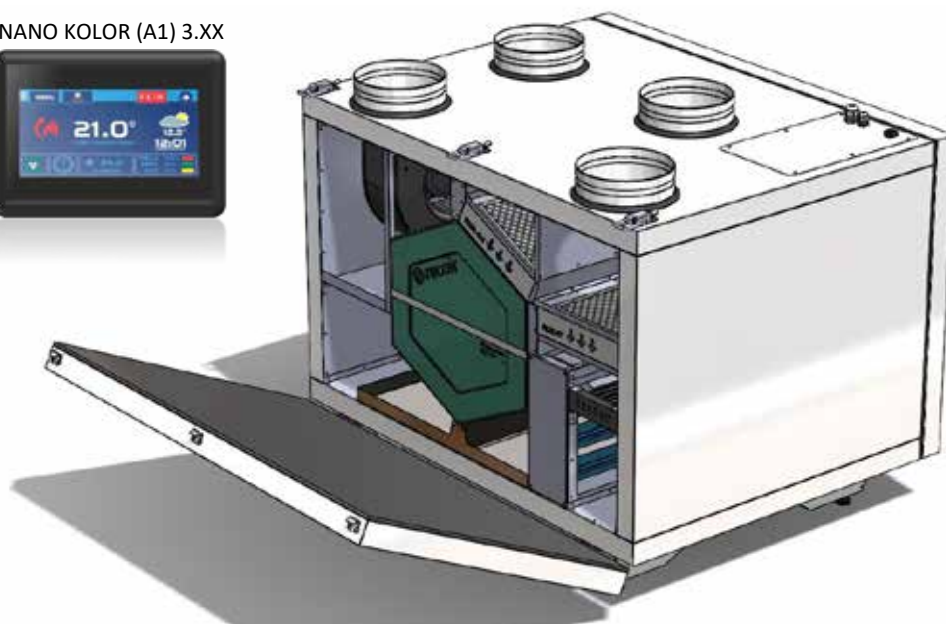


External wall insulation 20-26mm



PRO MAX 400 V (CLASSIC)

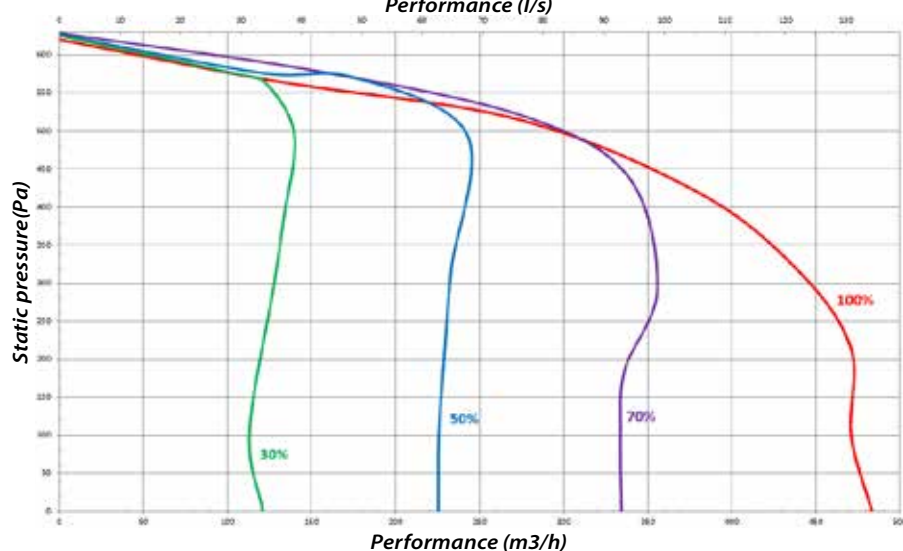
NANO KOLOR (A1) 3.XX

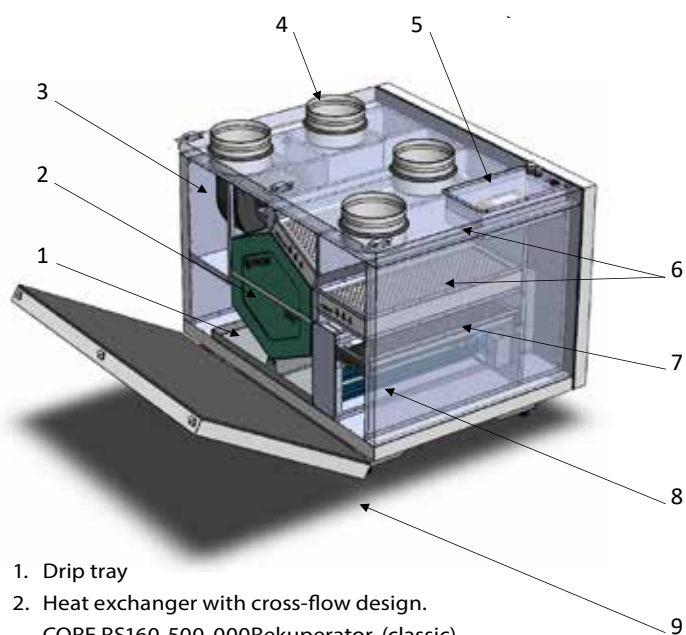
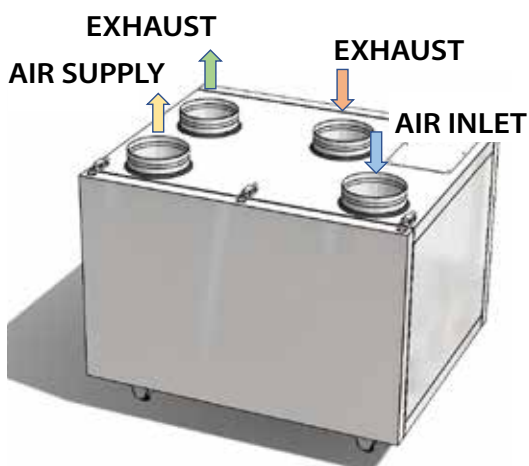


Equipment depending on version:

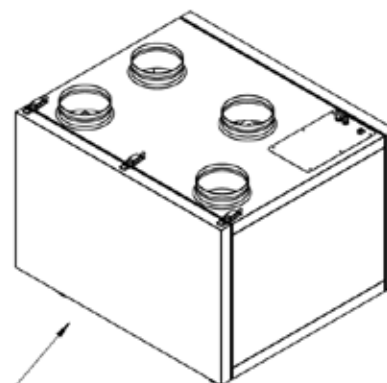
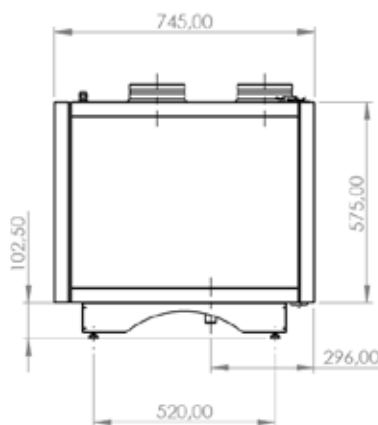
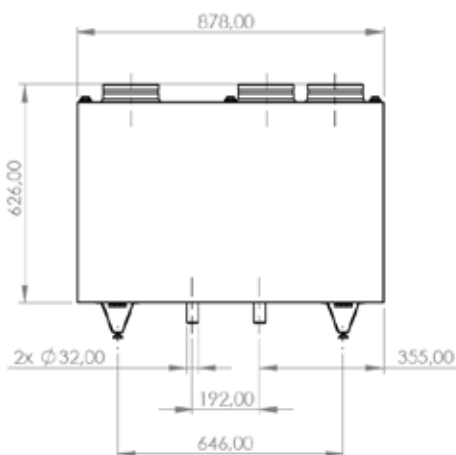
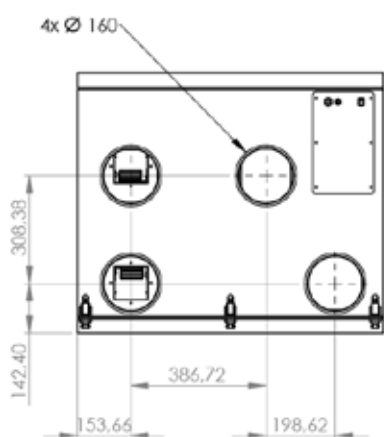
EQUIPMENT VERSION	Cross-flow, counter-current heat exchanger		Internet module
	Heat exchanger counterflow cross-flow	Heat exchanger ENTALPIC	
BASIC 400V	V	–	–
CLASSIC 400V	V	–	V
PREMIUM 400V	–	V	V

Flow characteristics.
Recuperator 400 V
Performance (l/s)





1. Drip tray
2. Heat exchanger with cross-flow design.
CORE RS160-500-000Rekuperator. (classic)
Enthalpy ERV366-H500-S-000254. (premium)
3. Fans:
GREG9 160x62R radial EC. 56W. 0,49A.
4. Connection to the system 4x Ø160
5. Control: AERO_4 - COMPIT.
Internet module: INEXT - COMPIT.
6. M5 filter in air intake chamber.
G4 filter in exhaust chamber.
7. Pre-heater PTC 2,0 KW. Started automatically. Prevents exchanger from freezing.
8. 100% bypass controlled by BELIMO CM230 electric actuator.
9. Hinged flap, closed with buckle locks.



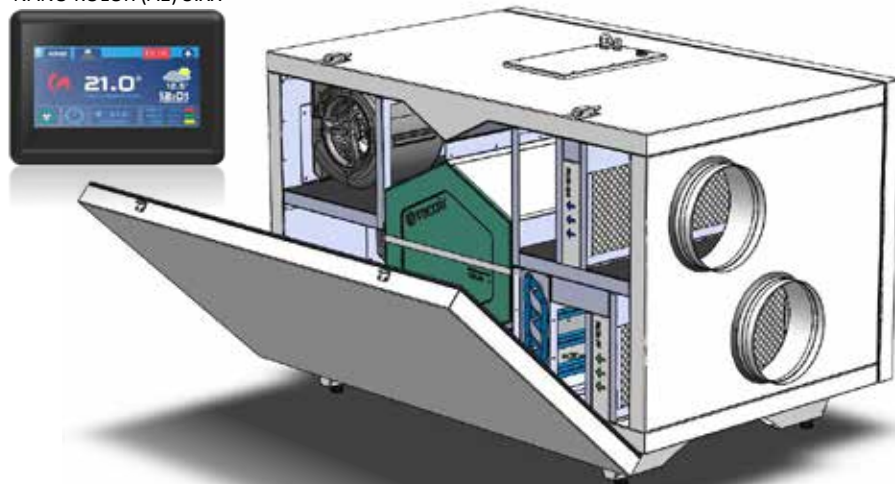
External wall insulation 40-46mm

PRO MAX 400 H / 600 H (CLASSIC)

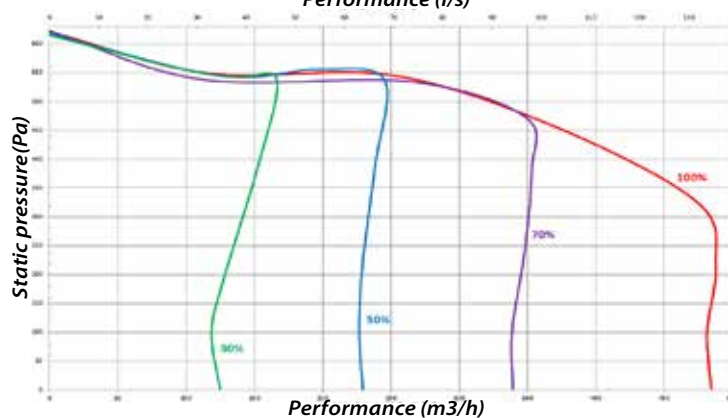
Equipment depending on version:

VERSION	EQUIPMENT		Cross-flow, counter-current heat exchanger				
	Heat exchanger counterflow cross-flow	Heat exchanger ENTALPIC					
			Fan: GREG9 160x62R				
			Fan: D3G146-HQ13-63				
			Heater: O-1,0KW				
			Heater: O-1,7KW				
			Internet module				
BASIC 400 H	V	-	V	-	-	-	-
BASIC 600 H	V	-	-	V	-	-	-
CLASSIC 400 H	V	-	V	-	V	-	V
CLASSIC 600 H	V	-	-	V	-	V	V
PREMIUM 400H	-	V	V	-	V	-	V
PREMIUM 600H	-	V	-	V	-	V	V

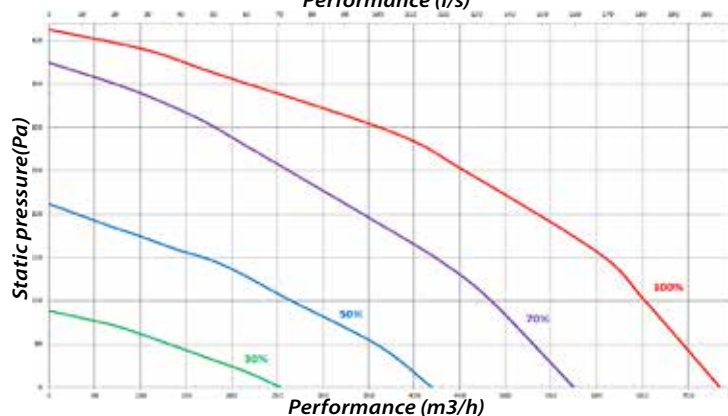
NANO KOLOR (A1) 3.XX

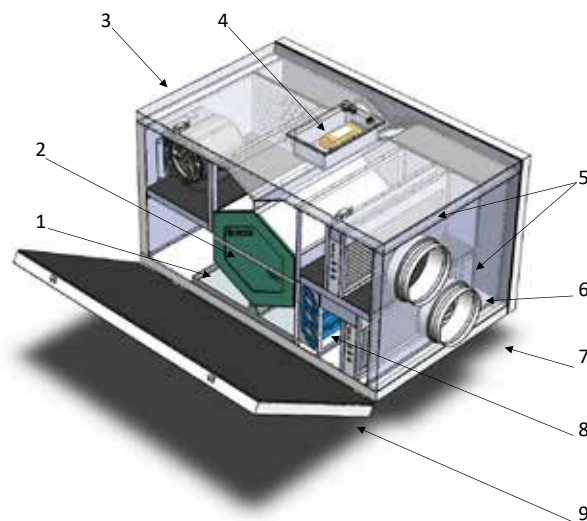
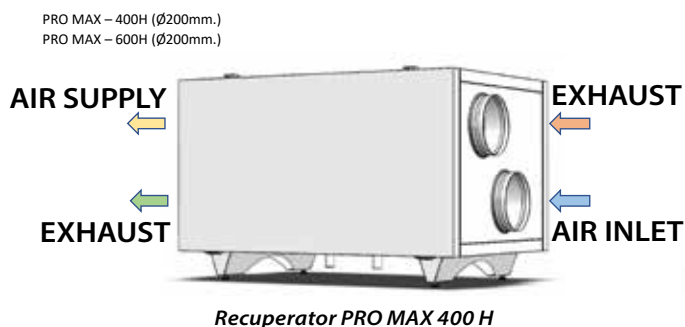


Recuperator PRO MAX 400 H
Performance (l/s)

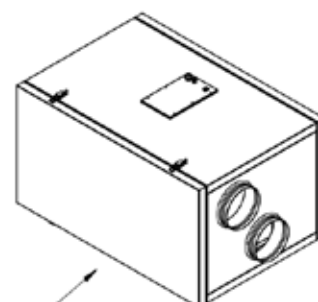
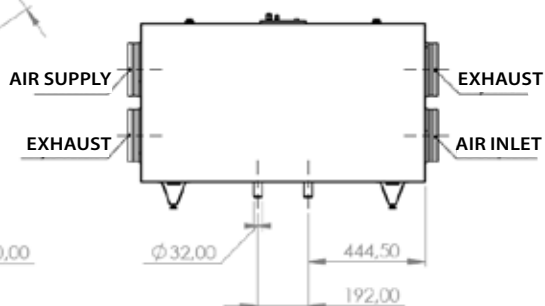
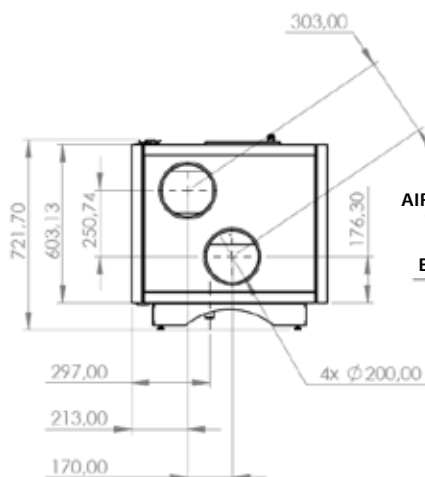
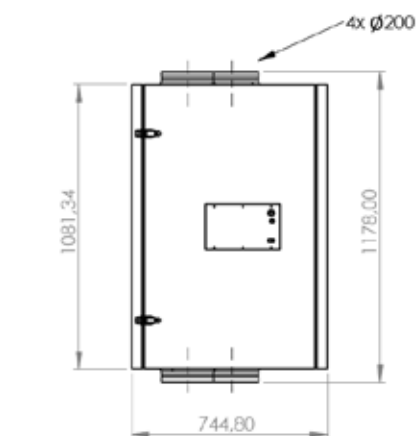


Recuperator PRO MAX 600 H
Performance (l/s)





1. Drip tray
2. Counterflow heat exchanger with cross-flow design
RS160-500-000Rekuperator. (classic)
Enthalpy ERV366-h500-S-000254. (premium).
3. fans:
GREG9 160x62R radial EC. 56W. 0.49A PRO MAX - 400H
D3G146-HQ13-63 EBM-PAPST radial EC. 230W. 1,8A. PRO MAX - 600H.
4. Control: AERO_4 - COMPIT.
Internet module: INEXT - COMPIT.
5. M5 filter in air intake chamber.
G4 filter in exhaust compartment.
6. System connectors 4x Ø200.
7. Pre-heater in air intake chamber, O-1,7KW. Started automatically.
Prevents exchanger from freezing.
8. 100% bypass, controlled by BELIMO CM230 electric actuator.
9. Hinged flap, closed with buckle locks.



External wall insulation 40-46m

AIR EXPERT 400 / 600 H (CLASSIC)

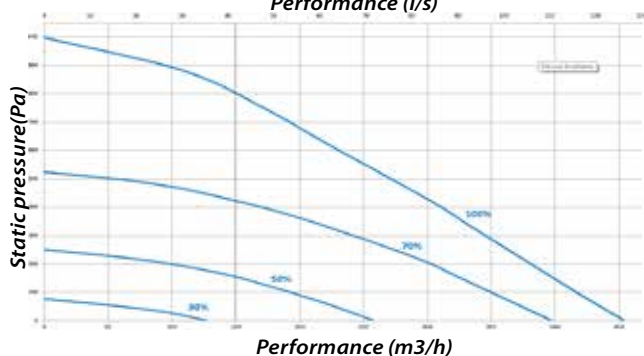


NANO KOLOR (A1) 3.XX

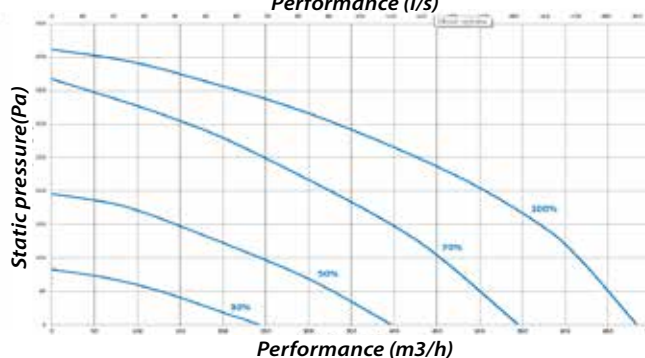
Equipment depending on version:

EQUIPMENT VERSION	Cross-flow, counter-current heat exchanger			Fan: RH19V-4IP.Z8.AR	Fan: D3G146-HQ13-62	Heater: PTC – 2KW	Heater: PTC – 3KW	Connection to the system Ø160	Connection to the system Ø200	Internet module
	Exchanger RS160-500-100	Exchanger RC160-500-110	Enthalpy exchanger ERV366-H500-R-000833							
BASIC 400 EPP	V	-	-	V	-	-	-	V	-	V
BASIC 600 EPP	-	V	-	-	V	-	-	-	V	V
CLASSIC 400 EPP	V	-	-	V	-	V	-	V	-	V
CLASSIC 600 EPP	-	V	-	-	V	-	V	-	V	V
PREMIUM 400 EPP	-	-	V	V	-	V	-	V	-	V
PREMIUM 600 EPP	-	-	V	-	V	-	V	-	V	V

Recuperator AIR EXPERT 400
Performance (l/s)

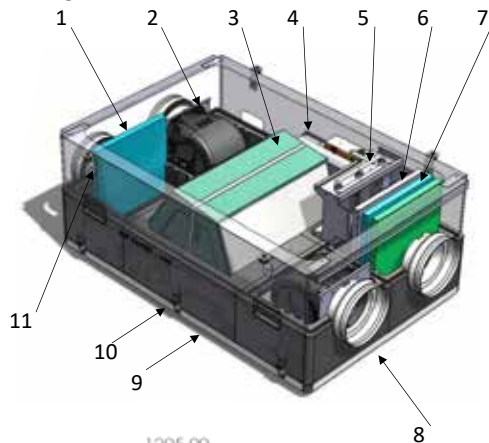


Recuperator AIR EXPERT 600
Performance (l/s)

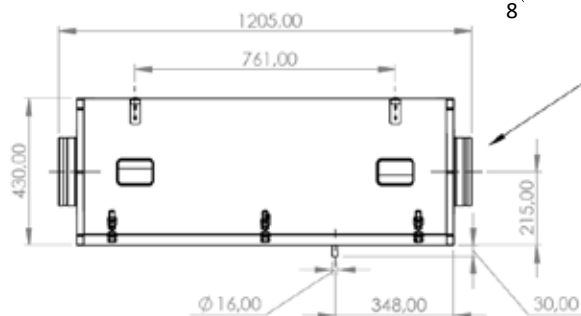


The main body is made of EPP material. It is an excellent sound insulator, reduces vibrations, protects It is an excellent sound insulator, reduces vibrations and protects against noise. Due to the special connection flanges The enclosure is sealed, one hundred percent sound The sealed casing is 100% airtight, which translates into very good efficiency results heat recovery efficiency. Recuperator in standard recuperator is equipped with an Internet module which allows for remote control. As a visual finishing touch casing and at the same time linking casing and at the same time linking the block into a whole, the galvanized metal sheet, powder lacquered in white color.

Total weight: 45kg.



1. Filter M5, in the exhaust chamber to protect the exchanger.
2. fans: RH19V-4IP.Z8.AR radial 190 VPRO with motor ECO55. 170W. 1,75-1,45A.
Installed in the intake and exhaust chambers of AIR EXPERT - 400 recuperator.
D3G146-HQ13-62 EBM-PAPST radial EC motor. 230W. 1,8A.
Installed in the intake and outlet chambers of AIR EXPERT - 600 recuperator.
3. Heat exchanger with cross-flow design.
CORE RS160ND - H500 MN. Recuperator AIR EXPERT - 400
CORE RC160ND - H500 MN. AIR EXPERT recuperator - 600
4. Control: AERO_4 - COMPIT.
Internet module: INEXT - COMPIT.
5. 100% bypass controlled by BELIMO CM230 electric actuator.
6. Preheater, PTC 3.0 KW. Started automatically.
Prevents the exchanger from freezing.
In the AIR EXPERT - 400 (BASIC), AIR EXPERT - 600 (BASIC recuperators, the heater is not available.
7. M5 filter in the air intake chamber. Optionally, to improve the quality of the supplied air. An additional filter can be used to improve the quality of the supplied air.
8. Connections to the system:
Ø160 AIR EXPERT - 400 recuperator
Ø200 - AIR EXPERT - 600 recuperator
9. Drip tray
10. Bottom flap locks x6pcs. Two of them, with the possibility of installing safeguards. Two of them with the possibility of installing safety devices against unwanted opening.
11. Mounting bracket x4pc



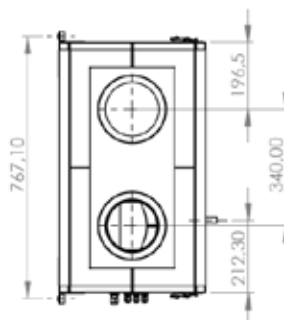
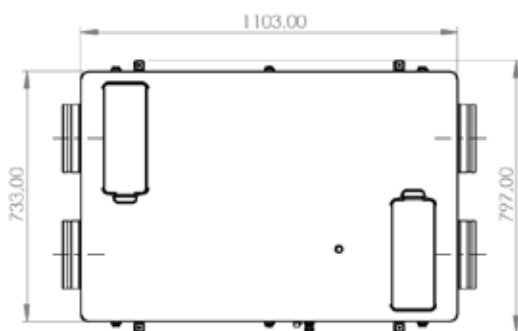
4x Ø160 AIR EXPERT - 400
4x Ø200 AIR EXPERT - 600

AIR SUPPLY

EXHAUST

AIR INLET

EXHAUST



AIR EXPERT 400 / 600 V (CLASSIC)

The main body is made of EPP material. It is an excellent sound insulator, reduces vibrations, protects against noise. By making special connection flanges in each

The closed casing is one hundred percent airtight, which translates into a very high. This results in very good heat recovery efficiency. Heat recovery efficiency.

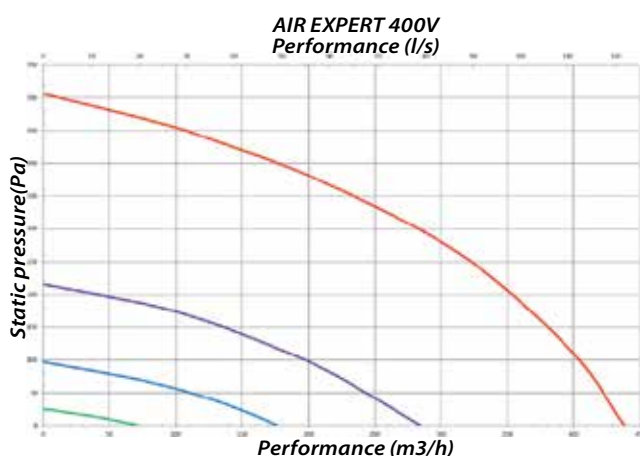
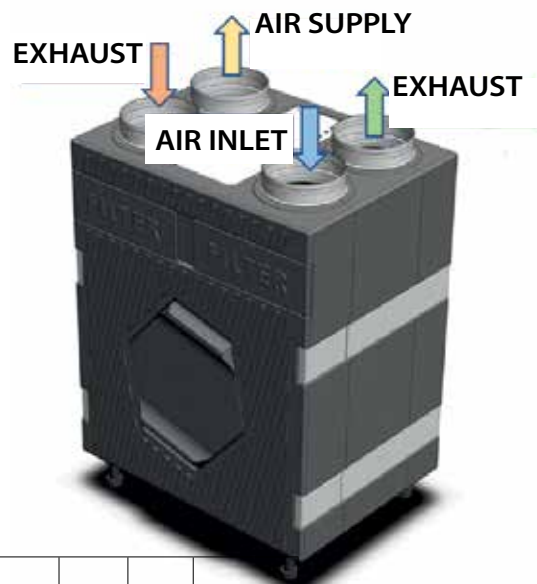
Recuperator as a standard is equipped with an internet module allowing for remote control.

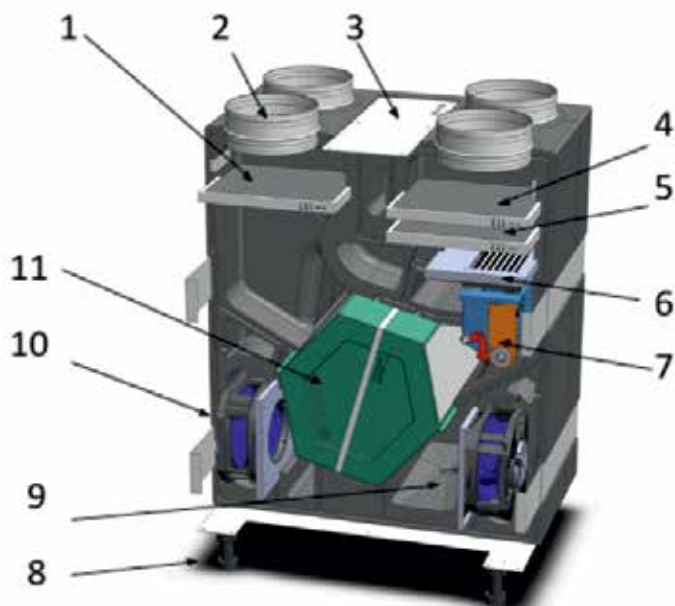
As a visual finishing of the casing, galvanized sheet metal was used, The casing is finished with galvanized sheet metal, powder-painted in white color.

Total weight: 32kg.

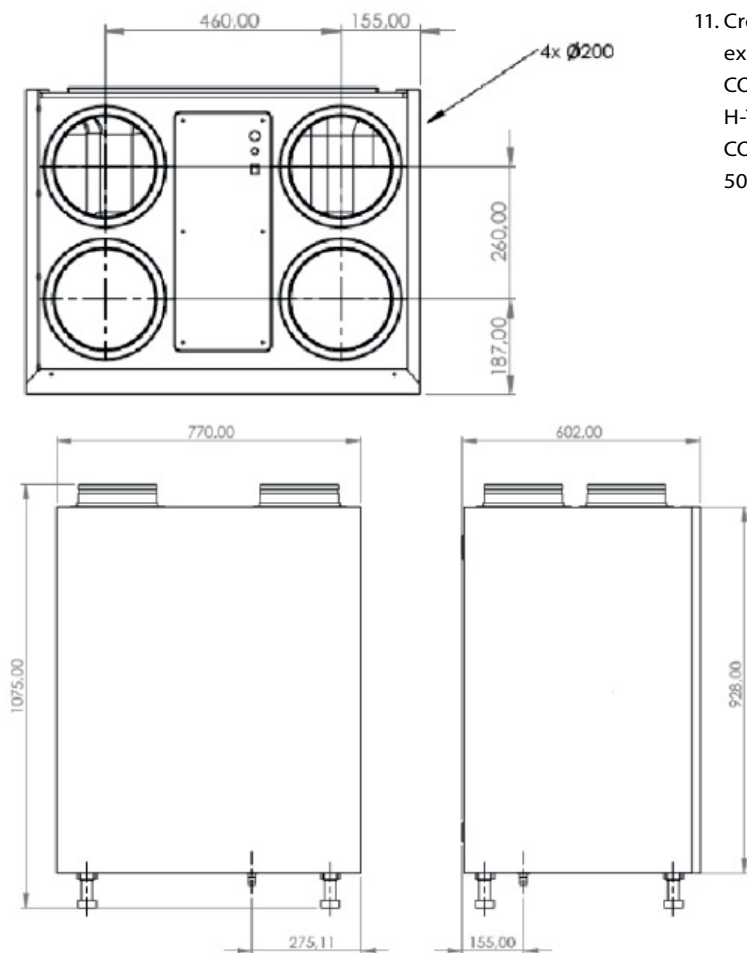
Equipment depending on version:

VERSION	Cross-flow, counter-current heat exchanger		Enthalpy exchanger ERV366-H500-R-000833	Fan: GR20V-4IP Z8-AR	White stripes (standard)	White casing (sheet metal)	Bypass	Internet module	Heater: PTC-2,0 KW	Flow [CSF]
	Exchanger RS160-500-100 (RSP+16-500-H-T-29)	Exchanger RC160-500-110 (RSP+16-500-H-T-29)								
BASIC 400 V	V	-	-	V	V	-	-	-	-	-
BASIC 600 V	-	V	-	V	V	-	-	-	-	-
CLASSIC 400 V	V	-	Optional	V	V	-	V	V	V	Optional
CLASSIC 600 V	-	V	Optional	V	V	-	V	V	V	Optional
PREMIUM 400 V	-	-	V	V	V	V	V	V	V	Optional
PREMIUM 600 V	-	-	V	V	V	V	V	V	V	Optional





1. M5 filters in the exhaust and intake chambers filters protecting the exchanger.
2. System connectors: fi200x4pc. Recuperator AIR EXPERT - 400V / 600 V
3. Control: AERO_4 - COMPIT.
Internet module: INEXT - COMPIT.
4. M5 filters in the exhaust and intake chambers exchanger protection.
5. Filter F7 in the intake chamber. Optionally for improving the quality of the supplied air.
6. Pre heater, PTC 2,0KW. Started on automatically activated. Prevents the exchanger from freezing. In the AIR EXPERT - 400 V / 600 V (BASIC) recuperators, the heater is not available.
7. 100% bypass controlled by an electric actuator BELIMO CM230.
8. Adjustable feet.
9. Drip tray.
10. Fans: GR20V-4IP.Z8AR ECblue 170W. Installed in air intake and exhaust chambers recuperator.
11. Cross-flow heat exchanger, counterflow heat exchanger.
CORE RS160ND - H500 MN (Recutech RSP+16-500-H-T-29) - AIR EXPERT 400 V.
CORE RC160ND - H500 MN (Recutech RSP+15-5000HOT029) - AIR EXPERT 600 V.



Accessory equipment

NANO COLOR is a room panel

It can be used to set the desired comfortable temperature, eco temperature, temperature. Outside the home (vacation) program. Switching between comfortable and eco. The switching between the comfortable and eco temperature as well as the OUT OF HOUSE ZONE is performed automatically by means. The switching between the comfort and eco temperature, and the away-from-home zone is performed automatically by means of a programmed daily and weekly schedule. Additionally the thermostat has a schedule for holidays and a manual operation mode.



Index

SW-RE-PODZ/0/NANO COLOR

NANO ONE is a room thermostat

It can be used to set the desired comfortable temperature, eco temperature, temperature. Out-of-home programme (HOLIDAY). Switching between comfortable and eco. The switching between the comfortable and eco temperature is performed automatically by means of the programmed. programmed daily and weekly schedule. Additionally, the thermostat has schedule for holidays and manual operation mode.



Index

SW-RE-PODZ/0/NANO ONE

The Nano S room thermostat

Which makes it possible to change the desired room temperature, set the The Nano S works with the Aero 4 ventilation module to change the room temperature, set the fan speed and open/close BY-PASS.



Index

SW-RE-PODZ/0/NANO S

Accessory equipment

Internet module

iNEXT is a web-based system for remote access to controllers: boilers, heat pumps, solar exchangers and solar thermal systems.

Index
SW-RE-PODZ/0/INEX



CSF module

AERO CSF is an additional module that extends the capabilities of AERO 4 with the function balanced air flow function.

Index
MODUŁ CSF



SHC module

The sensor is designed for measurement of carbon dioxide concentration, humidity and room temperature.

Index
MODUŁ SHC



SHK sensor

The sensor is designed for humidity and temperature measurements in the duct.

Index
CZUJNIK SHK



SHW module

The sensor is designed for measuring humidity and temperature in the premises.

Index
MODUŁ SHW



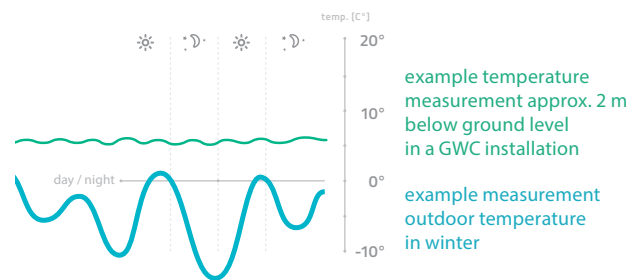
GWC - Ground Heat Exchanger

A **Ground Heat Exchanger**, or **GWC** for short, is an installation located below the surface of the ground and below the freezing zone, where the temperature fluctuates only slightly throughout the year. This system supplies pre-treated outside air to buildings with mechanical ventilation equipped with a recuperator. The system supplies pre-treated outside air to buildings with mechanical ventilation equipped with a recuperator.



GWC in Winter how does it work?

In winter, when temperatures can drop to -20°C , preheating. The preheating of air in GWC to $+1^{\circ}\text{C}$ results in real savings on heating.



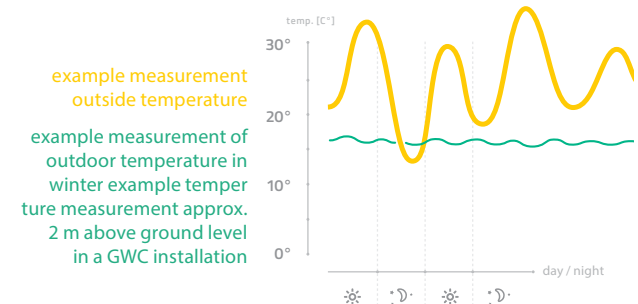
Benefits of using GWC

- The use of GWC in the entire system of supply and exhaust ventilation with recuperation significantly reduces power consumption electricity consumption in the recuperator itself (maintaining the temperature in GWC above 0°C eliminates the need to turn on the heater in winter) and improves the quality of air in the building as well as reduces the cost of heating the building.
- In summer, GWC serves as a fully ecological, almost free of charge air conditioner - minimal power consumption results from the operation of fans forcing air through the installation.
- Protects mechanical ventilation elements (recuperator) against freezing and frost in winter!
- GWC humidifies the flowing air which has a significant impact on the comfort of household members.



GWC in Summer how does it work?

Cooling of air from 35°C to 17°C provides pleasant, cool air flow inside the building. With this solution air conditioning becomes unnecessary, thus saving you considerable money.



Installation guidelines

When designing and installing the system the following recommendations of the manufacturer should be used manufacturer's recommendations and to select air The air flow rate should be selected in accordance with PN guidelines guidelines and the information given in the VENT-FLEX the technical data sheet of the VENT-FLEX product.

RECOMMENDATIONS

WHEN INSTALLING WITH WITH VENT-FLEX:

- The length of a single thread of VENT-FLEX should not exceed 11 m, longer sections up to 15 m under the condition that the pipe is routed. The length of a single line of VENT-FLEX air duct should not exceed 11 m. provided that the bends are kept to a minimum of the duct
- The ceiling plenum boxes should be mounted at least 30 cm distance from the walls, respectively in rooms in the furthest possible corner or over a window. Avoid installation above e.g. sleeping beds.
- Supply and exhaust ducts in the case of leading in case of leading them through insulated, not heated rooms, Insulate with a layer of wool of min. 20 mm thick wool layer or suitable lagging for this purpose
- supply and exhaust air ducts in case of leading through through uninsulated, non-heated rooms, Insulate with a layer of wool with min. 100 mm wool layer or appropriate lagging for this purpose
- Absolutely insulate the intake and the outlet
- Insulate supply ducts in case a cooling device is connected to the system, heating device is connected to the system, i.e. ground heat exchanger, heater/cooler, etc.
- max. temperature of the transported air in VENT-FLEX ducts is 80o C.

The minimum air flow rate for one person is specified in are specified in the PN-83/B-03430 standard and in the in the amendment to this standard PN-83/B-03430/ Az3:2000.

The most important provisions of the above mentioned standards:

- The volume flow rate of ventilation in a residential building is determined by the sum of extracted "dirty" air streams of auxiliary rooms listed below, which should be at least:
 - for a kitchen with an outside window, equipped kitchen with an outside window, equipped with a gas or charcoal stove: **70 m³/h**
 - for a galley with an outside window, fitted with with an electric stove: 30 m³/h in a dwelling up to: **30 m³/h**, for a kitchen with an outside window, equipped with an electric cooker: 30 m³/h in a flat for up to 3 persons, and 50 m³/h for more than 3 persons
 - for a kitchen without an outside window, equipped with an electric cooker: **50m³/h**
 - for kitchens without an external window fitted with with a gas cooker, mechanical ventilation is mandatory exhaust ventilation: 70 m³/h
 - in a bathroom (with or without a toilet): 50 m³/h
 - in a separate toilet: 30 m³/h
 - laundry rooms - min. 2 times of exchange of volume of of air exchange in one hour
 - in an auxiliary windowless room (pantry, vestibule, dressing room): 15 m³/h
 - for a living room separated from the rooms kitchen, bathroom and toilet in a single-family house or a two-level apartment of a multi-family house: 30 m³/h / person.

It is also recommended to design ventilation devices (air handling units) capable of periodically increasing air flow rate to at least 120 m³/h. It is recommended to use ground heat exchanger It is recommended to use Ground Heat Exchanger min. 1 times of air exchange in one hour.

Example of proper air flow rate selection

Room number	Room name	Area [m ²]	Cubature of room [m ³]	Supply air [m ³ /h]	Exhaust [m ³ /h]	Multiplication factor
1	Living room	25	69	100	-	1,5
2	Cabinet	10	28	40	-	1,5
3	Kitchen	14	41	-	80	2,1
4	Pantry	3	8	-	15	1,8
5	WC	3	8	-	30	3,6
6	Wardrobe	4	11	-	15	1,4
Total		59	165	140	140	

Ducted filter - air purifier

TRIPLE-LAYER FILTRATION HIGH PURIFICATION EFFICIENCY

Air purifier is an innovative, anti-smog duct filter that efficiently filters smog and airborne dust and smog-forming odours.

It features three-stage filtration, high efficiency and easy installation.

Designed for use in buildings using mechanical ventilation with recuperation or without recuperation. Particularly recommended for people with sensitive respiratory allergies.

Efficiency of the triple filtration system $PM_{2.5} > 95\%$.

The efficiency and quality of filtration depends on the cleanliness of the filters, therefore special attention should be paid to ensure that the filters are filters should be maintained and replaced in a timely manner.

Available in black in two sizes.

Filters used:

1. Standard filter G4 – eliminates dust and standard smog particles
2. Carbon filter – eliminates odours, including those from smoke and smog
3. Hepa filter – retains most (at least 99.97%) of mechanical contaminants larger than $0.3\ \mu m$, as well as fungal, protozoan and bacterial cells and most viruses





Advantages of the air purifier

- Effective three-stage filtration
- High cleaning efficiency
- Low air resistance
- Easy to install
- Simple filter replacement

Models and technical parameters

Index	Perormance (m ³ /h)	Size (mm)	Connection diameter (mm)	Net weight (kg)
SK BOX 150	300 - 400	538 x 338 x 223	150	6
SK BOX 200	400 - 600	542 x 396 x 254	200	7

Index	Product name
SK FILTRY BOX 150	SK FILTRY DO SK BOX 150 (3 SZT)
SK FILTRY BOX 200	SK FILTRY DO SK BOX 200 (3 SZT)

Trade offer

SALES OFFER NO

FOR:

PRICE LIST PRODUCTS SUBJECT TO DISCOUNT		
PRODUCT NAME	DISCOUNT	REMARKS
Plenum boxes and distributors VENT-FLEX		
Circular air distribution systems - galvanized Spiro		
VENT-FLEX ducts		
Rectangular air distribution systems VENT-FLEX Plus		
Flexible insulated ducts FLEX type		
Air diffusers, supply air diffusers, ejector hoods		
Thermal insulation		
Air handling units		

Issue date:

Payment period:

Period for execution of the order:

Additional arrangements:

Account manager:

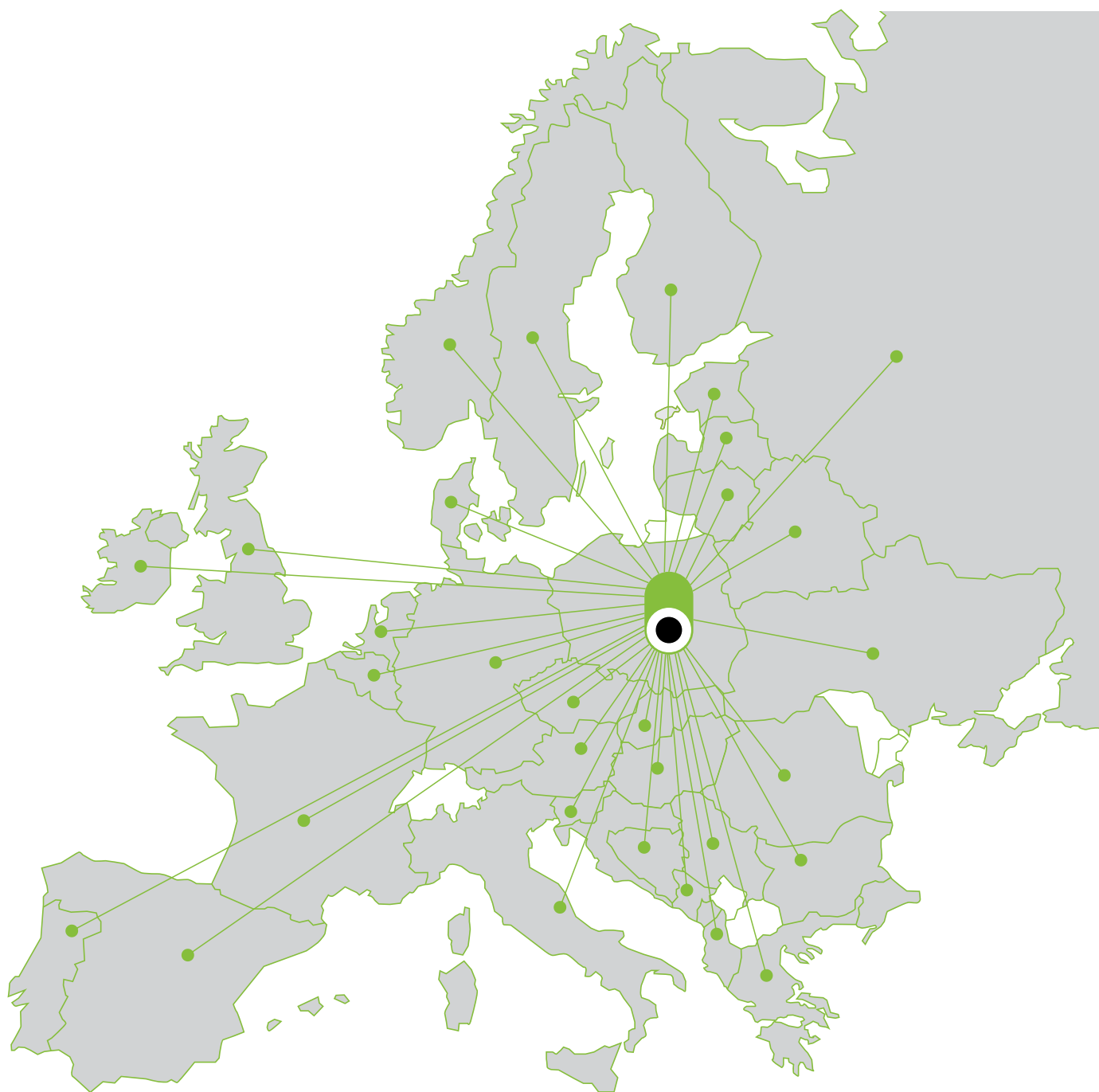


F.H.P PRODMAX
ul. Sokołowska 38, 05-806 Sokołów
phone/fax. +48 22 723 01 62

Production Plant
ul. Wyzwolenia 130, 09-300 Żuromin
phone/fax. +48 23 659 39 57/w. 18

In the event that, after placing an order by the Customer, circumstances justifying an increase in the price of the ordered goods occur, such as If, after placing an order, circumstances justifying an increase in the price of the ordered goods occur, such as an increase in the price of raw materials or an increase in the exchange rate of a foreign currency, the Seller shall be entitled to increase the price of the goods accordingly, indicating the reason for the increase.

Export department



Export

mob. +48 516 452 904

email: export.prodmax@prodmax.pl

Krzysztof Szymański - Managing Director

mob. +48 502 308 944

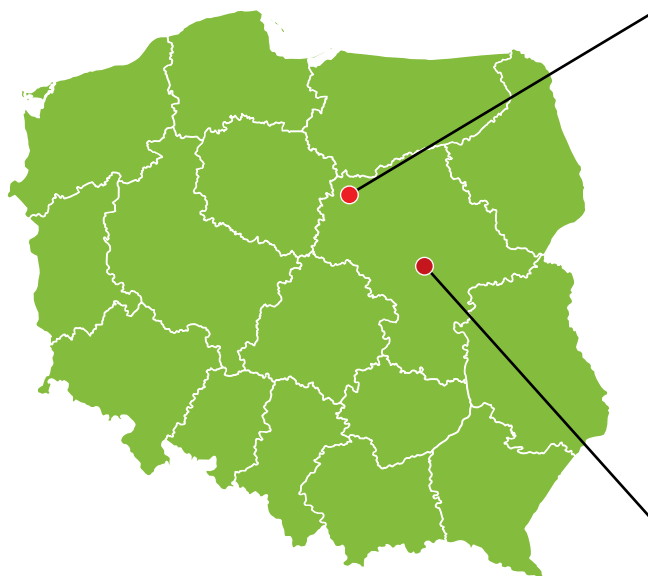
email: krzysztof.szymanski@prodmax.pl

Milena Floras - Head of Export Department

mob. +48 503 498 146

email: milena.floras@prodmax.pl

CONTACT DETAILS



PRODUCTION PLANT

09-300 Żuromin, Poland
ul. Wyzwolenia 130
phone / fax: +48 23 659 39 57
mob.: +48 604 441 233
e-mail: zuromin@prodmax.pl



COMPANY HEADQUARTERS

05-806 Sokołów, Poland
ul. Sokołowska 38
phone / fax: +48 22 723 01 62
mob.: +48 606 250 762
e-mail: prodmax@prodmax.pl



CONTACT:

SALES DEPARTMENT – SOKOŁÓW

mob.: +48 606 250 762
e-mail: prodmax@prodmax.pl

SALES DEPARTMENT – ŻUROMIN

mob.: +48 604 441 233
e-mail: zuromin@prodmax.pl

TECHNICAL DEPARTMENT

mob.: +48 515 341 224
e-mail: piotr.bugowski@prodmax.pl

ACCOUNTING DEPARTMENT

mob.: +48 664 485 496
e-mail: ksiegowosc@prodmax.pl

MARKETING DEPARTMENT

mob.: +48 505 777 398
e-mail: marketing@prodmax.pl

IMPORTS / PURCHASES

mob.: +48 664 485 428
e-mail: zakupy@prodmax.pl

EXPORT SALES / DIRECTOR

mob.: +48 502 308 944
e-mail: krzysztof.szymanski@prodmax.pl



F.H.P. PRODMAX

05-806 Sokołów, Poland
ul. Sokołowska 38

NIP: 534 020 60 16

REGON: 010935668

NR KONTA: BANK ING 49 1050 1924 1000 0022 9749 41 02

*We take care
of your home's climate!*



rekuperacja.prodmax.pl



COMPANY HEADQUARTERS

05-806 Sokółów
ul. Sokółowska 38
phone / fax: +48 22 723 01 62
mob.: +48 606 250 762
e-mail: prodmax@prodmax.pl

PRODUCTION PLANT

09-300 Żuromin
ul. Wyzwolenia 130
phone / fax: +48 23 659 39 57
mob.: +48 604 441 233
e-mail: zuromin@prodmax.pl